

WEATHER			
Monday, Nov. 18	48	59	0.10
Tuesday, Nov. 19	34	47	0.00
Wednesday, Nov. 20	34	47	Trace
Thursday, Nov. 21	33	44	0.00
Friday, Nov. 22	32	44	Trace
Saturday, Nov. 23	32	44	0.00
Sunday, Nov. 24	32	44	0.00
Monday, Nov. 25	32	44	0.00
Tuesday, Nov. 26	32	44	0.00

# The Chelsea Standard

## QUOTE

Action makes more fortunes than caution.  
—Vanyenargues

SEVENTIETH YEAR—No. 21

12 Pages This Week

CHELSEA, MICHIGAN, THURSDAY, NOVEMBER 24, 1960

10c per Copy

SUBSCRIPTION \$3.00 PER YEAR

# SANTA CLAUS WILL VISIT CHELSEA FRIDAY

## Arrival Scheduled At Noon for First Of Several Visits

### Named to Juvenile Court Citizens Advisory Council

The Rev. Philip Rusten, pastor of the Chelsea Congregational church, and Mrs. George Frisinger of 13450 Jerusalem Rd., were elected as members of the Citizens Advisory Council of the Washtenaw County Juvenile Court at a meeting of the council held in Ann Arbor, Wednesday, Nov. 16.

The two Chelsea area members succeed George Bergman, Chelsea High school counselor, and Charles Lancaster, former Chelsea representative.

A total of 27 members serve on the Advisory Council, the general purpose of the body being to advise Probate Judge John W. Conlin in promoting an effective juvenile court program.

Chairman of the Advisory Council is Joseph Granata of Ypsilanti.

Council members are elected for three-year terms.

In addition to the two Chelsea members elected, new members of the Council named Wednesday are Mrs. Robert Tefft of Saline, Mrs. Josephine Bukaw, of Manchester, Harvey Kulbert of Secaucus, N.J., and Glyn Barnett of Ann Arbor.

Re-elected to succeed themselves were Mrs. Helen Van Tine, Dr. Willard Hendrickson, Leon Roach and Mrs. Robert McNamara of Ann Arbor.

Louis Rome is director of Juvenile Court Services.

### Special Gift Bags Promised for All Good Children

Friday, the day after Thanksgiving—that's the day Santa Claus will make the first of several pre-Christmas visits to Chelsea to talk to youngsters and to pick up his mail at his special red-painted mail box in front of the Post Office.

Santa Claus will be met by the Chelsea fire truck and escorted through Main St. before going to the Municipal parking lot where he hopes to visit with all the children who assemble there.

The public address system at the parking lot will make it possible for him to talk to everyone at the same time and invite them to come up to the platform and tell him what they are wishing for as Christmas gifts.

He will have a gift bag of goodies for each child who visits him. He is preparing gift bags for 1,000 children for his first pre-Christmas visit.

His arrival here Friday is timed for 12 o'clock noon.

Santa Claus is planning to be here each Friday afternoon until Christmas (possibly Saturdays, also).

Extra shopping hours planned by merchants during the holiday season begin Dec. 17.

The downtown area is being beautifully decorated for the Christmas season. Already in place are huge "Sandy Claus" on the street light posts and garlands of greens and brightly colored tinsel strung across the streets.

Santa's mail box will be ready in time for youngsters to deposit their letters this week-end.

No postage is required if the letters are deposited in Santa's red-painted mail box directly in front of the Post Office steps.

Only 30 days left before Christmas!

### Junior High Open House Set Nov. 30

Junior High school teachers will hold open house at the school for parents of students next Wednesday evening, Nov. 30, from 7 until 9 p.m. It was announced by the high school principal, Charles Lane.

Students will not be at the school—the open house is planned primarily to give parents an opportunity to talk with the teachers about the progress of their sons and daughters. Report cards will have been distributed that day.

A similar open house for parents will be held at Chelsea High school a week later on Wednesday, Dec. 7, also from 7 until 9 p.m.

Principal Lane said that later in the year, during the spring semester, open house will again be held at both the Junior and Senior High schools.

At that time several of the departments will be opened for inspection and exhibits and displays of students' work will be included.

The Nov. 30 and Dec. 7 open house programs, he emphasized, will be for teachers and parents only and were planned following the receipt of a number of requests for such an opportunity for parents to meet with their children's teachers.

### St. Barnabas' Financial Drive Now Underway

The annual financial campaign of St. Barnabas' Episcopal church began this week with a letter from Robert Baldwin, chairman of the Bishop's Committee of the Episcopal Mission, to each attending family. He reminded his fellow Episcopalians that the program of their local congregation depended upon their support for the next year.

For several years St. Barnabas' has not announced ahead of time a proposed budget for the following year. Instead, the budget is not considered until the financial pledges of the members are turned in on the first Sunday in Advent, which is Nov. 27, this year. This "pre-budget canvass" plan is followed in order to allow the people to determine the extent of the work done by their congregation by the maximum gifts they may

(Continued on page five)



### W. A. Impola Dies Tuesday At Hospital

Walter A. Impola, chief engineer at Central Fibre Products, Inc., died early Tuesday at St. Joseph Mercy hospital, Ann Arbor, following a long illness. He was 44 years old.

He had been employed at Central Fibre since Aug. 1, 1939, when he began work with the company as a tool maker. He was later promoted to the position of draftsman and then, March 3, 1952, to chief engineer.

He was active in community and church affairs and had served on the Board of Trustees and the Board of Deacons of the Congregational church. He was active on the planning and building committee for the construction of the educational unit at the church four years ago.

He is credited with designing the memorial fountain dedicated three years ago at Veterans Memorial Park on North Main St.

He was a veteran of World War II, having served in the South Pacific with the Navy Seabees from June, 1943, until November, 1945.

He returned to work at Central Fibre, Dec. 5, 1945, and continued his employment there until he became too ill to work on June 7 of this year.

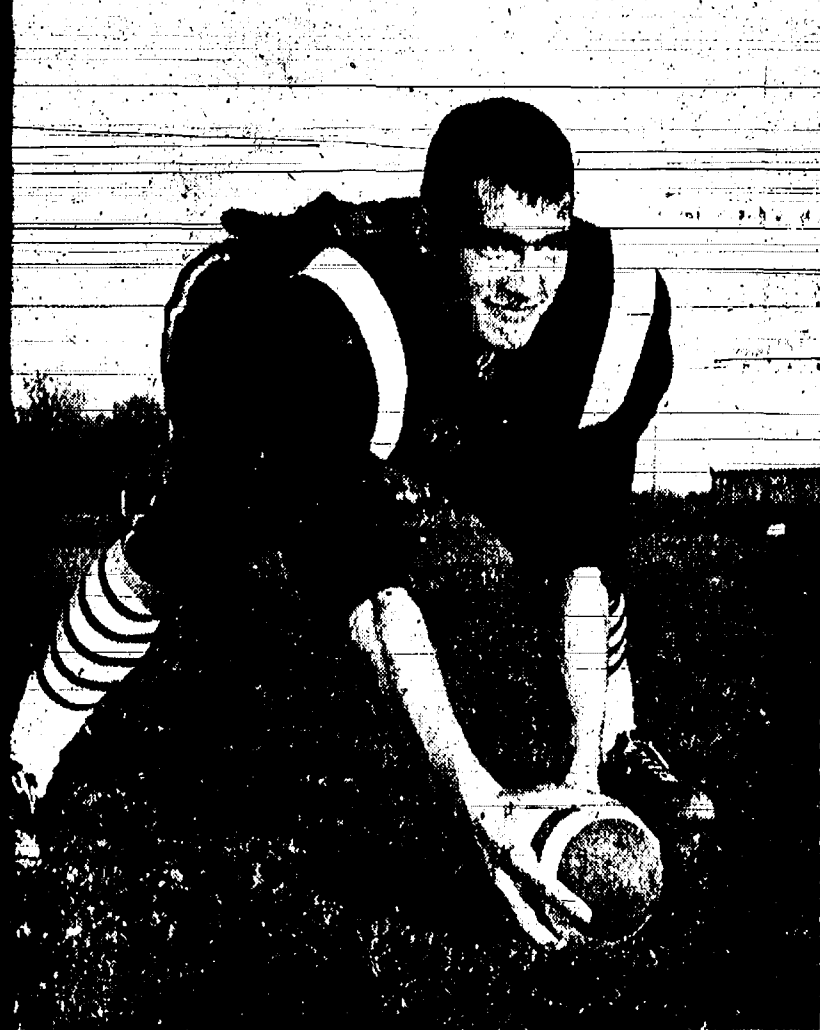
Born March 1, 1916, at Crystal Falls, he was a son of Matt and Mary Mannisto Impola. He came to Chelsea in 1937 and had made his home here since then.

March 6, 1948, he was married to Eva Harris, who survives. The family home is at 610 Howard Rd.

Surviving, in addition to Mrs. Impola and their daughter, Crystal Elizabeth, are a sister, Mrs. Melvin Hall (Scheidt) of Crystal Falls, and two brothers, William of Bay City, and Hugo of Crystal Falls.

Friends may call at the Burghardt Funeral Home and funeral services will be held there at 2 p.m. Friday with the Rev. Philip Rusten officiating. Burial will take place at Oak Grove cemetery.

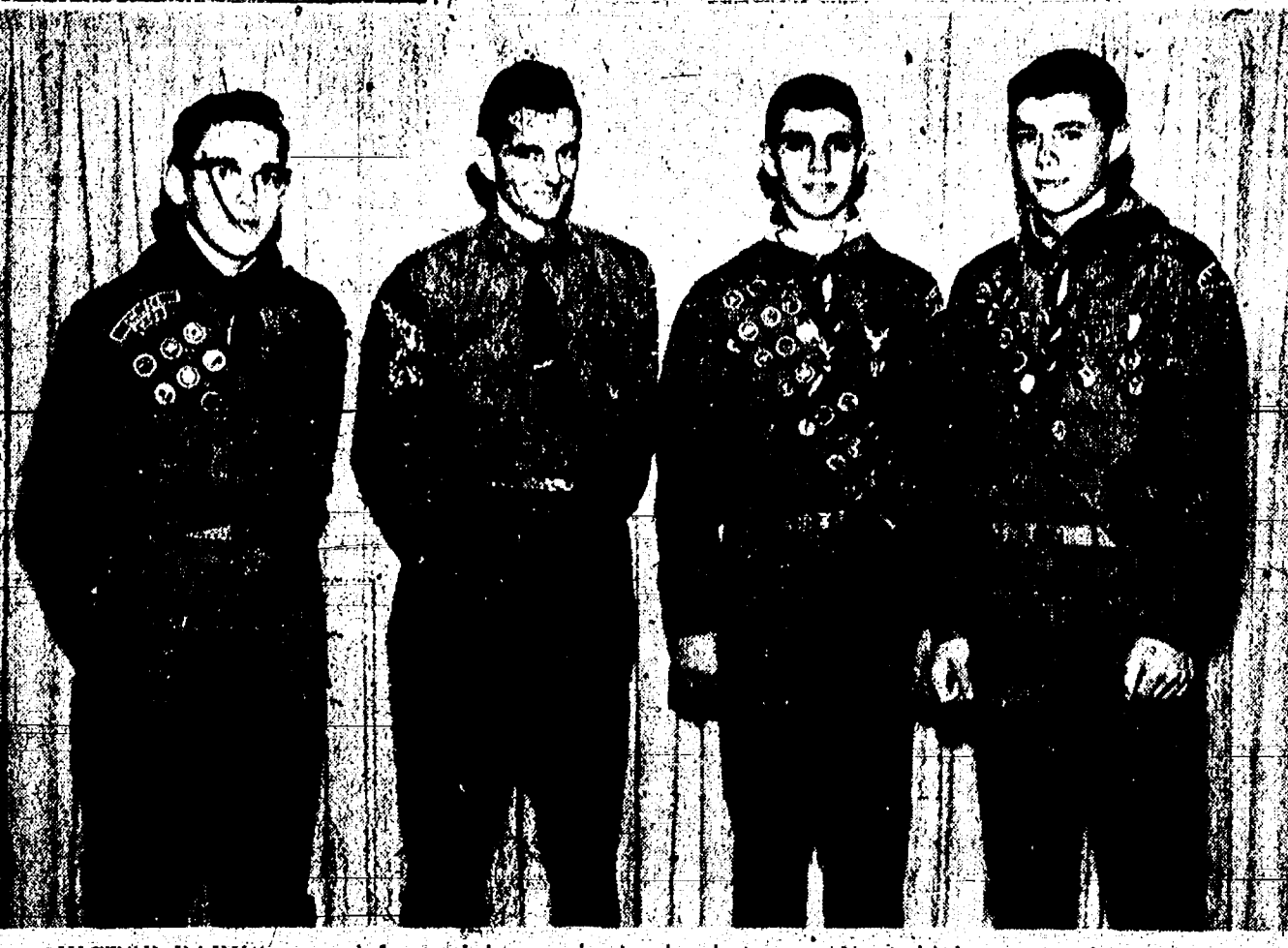
DAVE McLAUGHLIN, who with Jim Maynard, was chosen captain of the 1961 Chelsea High school football squad at Chelsea High school, was chosen by his 1960 teammates as "most valuable back" for a season just completed. Others honored are Dan Ellenwood, as "most valuable lineman"; Don Wilson, "most improved lineman"; and Don Blalock, "most improved back." Announcement of the names of co-captains, other honored team members and letter winners was made at the annual football dinner held Nov. 15 at Chelsea High school cafeteria, served by mothers of football team members. Coaches Alan Conklin, Truman O'Doherty and Bert Taylor were among the guests at the dinner.



JIM MAYNARD was named co-captain of the 1961 Chelsea high school football squad, announcement of his choice being made at the annual football dinner held Tuesday Nov. 15, at the Chelsea High school cafeteria. He heads the squad next year along with Co-Captain Dave McLaughlin. Mothers of team members prepared and served a chicken dinner to honor the 1960 football team at the close of the season.



MOST VALUABLE LINEMAN—Chelsea High School Senior, Dan Ellenwood, was chosen "most valuable lineman" of the 1960 football team when members of the squad made their special selections at the close of the season. Announcement of Ellenwood's choice was made at the annual football dinner given each year by mothers of the players. The dinner took place Tuesday evening, Nov. 15, in the high school cafeteria.



VICTOR PARKS, second from right, received Boy Scouting's highest award, that of Eagle Scout, at a Court of Honor held in the Congregational church dining room Monday evening, Nov. 14. It was also announced that he is a member of the Order of the Arrow, an organization within the Boy Scouts, for which Scouts are chosen by their local troop. Next highest awards presented at the Court of Honor went to Roy Lange, at left, Star Scout, and to Curtis Farley, extreme right, Life Scout. Shown with the three award winners, second from left, is Troop 25 Scoutmaster Robert Foye.

### Chest Fund Totals About 91% of Goal

With the 1960 Community Chest campaign approximately 90 per cent complete, no significant change is expected in the present total of \$13,800 in cash and pledges. The present amount is about 91 per cent of the current campaign goal of \$15,237, according to a report given at the Nov. 16 Community Chest meeting by Jack Wellnitz, 1961 campaign chairman.

Present plans call for payment to benefitting agencies on a pro rata basis of 91 per cent of their budgeted allocation. Payments will be made upon request after Jan. 1, 1961.

As reported at Wednesday's meeting the totals in the six categories of the campaign are as follows: industry, \$8,980; business, \$2,395; residential, \$1,175; rural, \$340; schools, \$480; and clubs, \$210.

This year's total contributed is \$400 less than was received last year. Last year's figure of \$14,260 was also 91 per cent of the goal, which had been set at \$15,667. It was pointed out at the meeting that anyone in the community who might have been missed by solicitors and who would wish to make a contribution may leave checks or money with Miss Gertrude Young at Merkel Brothers Store.

Other business at Wednesday's meeting included discussion of plans for the annual meeting to be held Jan. 18, 1961. All people of the community are welcome and invited to attend the annual meeting. Time and place of the meeting will be announced later.

At that meeting seven directors for three-year terms will be elected. All contributors of one dollar or more in the current campaign are eligible as candidates for election as board members.

### Sheriff's October Report Shows 127 Arrests Made

The Washtenaw County Sheriff's Department, in a monthly report issued this week covering October activities, states that a total of 708 complaints were processed in the 31-day period.

The department made 127 arrests, closed 24 warrant cases, served 771 civil papers, and issued 53 traffic violation summonses.

A total of 103 accidents were investigated of which two involved fatalities; 25 involved personal injuries; and 70 property damage.

The department's cars were driven a total of 40,182 miles during the month.

The Dog Control Division reported a total of 130 complaints and 80 dogs picked up.

In the Drivers' License Division the following information was compiled: a total of 1,421 licenses issued including 43 duplicates; 229 chauffeurs, renewals, 965 operator renewals, 19 originals, and 1 minor renewal. Fees collected amounted to \$929.75.

The monthly report was concluded with a notation stating that 5,185 meals were served to inmates at the County Jail during October.

### Official Vote Is Certified For County

Washtenaw county's board of canvassers has completed the official canvass of returns of the Nov. 8 election and results show that a total of 66,052 votes were cast in the county. This is considered an exceptionally large turnout. Total registration in the county is 89,269.

The board of canvassers commented that township and city election officials and inspectors did an excellent job in compiling and reporting returns. The returns were declared "the best ever" to have been handled by the board of canvassers.

Mrs. Luella Smith, as county clerk, served as clerk of the canvassers. Harold W. Schneider, a retired teacher, was chairman. Other members were Luman Seamans, of Bridge Lake, and Walter Gregg of Whitmore Lake.

The official county totals, as affirmed by the board of canvassers, are as follows: president, Kennedy-Johnson, 25,120; Nixon-Lodge, 39,932; governor—Swainson, 24,308; Burgwirth, 39,592; lieutenant-governor—Lesinski, 24,061; Reid, 38,706; secretary of state—Hare, 27,290; Kruger, 35,965; attorney general—A. d. m. s., 25,325; Miles, 37,372; state treasurer—Brown, 25,477; Calhoun, 37,285; auditor general—Smith, 25,028; Clements, 37,559.

The list continues with the following: U. S. senator—McNamara, 25,359; Bentley, 38,022; representative in Congress—Payne, 25,095; Mender, 38,061; state senator—Cutler, 25,199; Thayer, 37,080; representative in state legislature (second district)—Dammiller, 14,500; Warner, 18,083; (first district) Grace Marekwardt, 11,067; Huxley, 18,076.

Others on the list are prosecutor.

(Continued on page six)

### Kiwanis Club Will Host Area Farmers

Kiwanians have made special plans for the next three Monday evenings, it was announced this week.

Next Monday, Nov. 28, is the annual Farmers' Night program when members invite area farmers as their guests at the 6:15 p.m. dinner meeting in the social center of the Methodist church.

The following Monday evening will be the annual Christmas "kids party" for Kiwanians and their children, 12 years of age and under; and on Dec. 12, the special event is the annual Ladies' Night Christmas party.

The program at the Nov. 21 meeting of the Kiwanis club featured the Suzie Girl Scout Speakers, an organization within the Girl Scouts which has for its purpose the development of public speaking.

Three Ann Arbor girls—Connie Bowler, Gerry Wrenker and Mary Jane Garlick—spoke on the following topics, respectively: The Scout Program; History and Purpose of Girl Scouting; and Local, National and International Program of Girl Scouting.

Miss Kay Kimball, Girl Scout district director, accompanied the Girl Scouts.

In the absence of Paul F. Niehaus, who is a patient at St. Joseph Mercy hospital, Ann Arbor, Alfred D. Mayer led group singing with Mrs. Niehaus as accompanist.

Louis Burghardt was named as a member of the board of directors. Guests at the meeting Monday were Dr. George Bowler of Ann Arbor, and Russ Potter, who presented a Chelsea Rod and Gun club sponsored program at Chelsea High school Monday evening.

(Continued on page five)

## PROCLAMATION

WHEREAS, alcoholism has been recognized as a disease exceeded only by cancer, heart disease and mental illness among our national health threats and

WHEREAS, alcoholism afflicts directly 5,000,000 Americans, and

WHEREAS, the cost of alcoholism in human suffering, in disintegration of family life, in economic attrition to the individual and the community is incalculable, and

WHEREAS, the National Council on Alcoholism has for 16 years provided through its information centers and other resources a three-pronged program of education, community service and research to bring understanding to our citizenry of the dangers of this destructive but treatable disease, and

WHEREAS, the Washtenaw County Committee on Alcoholism, an affiliate group of the National Council on Alcoholism, has instituted in Chelsea, Michigan, its first annual Alcoholism Information Campaign to focus public attention on one of America's gravest health threats

NOW, therefore, I, Donald Alber, President of Chelsea, Michigan, do hereby proclaim the week of November 28 through December 2, 1960

ALCOHOLISM INFORMATION WEEK

in Chelsea, Michigan, and urge the men and women of our community to support the Washtenaw County Committee on Alcoholism and the National Council on Alcoholism in this nation-wide campaign to alert our citizens to the dangers of alcoholism.

Donald C. Alber,  
President,  
Village of Chelsea, Michigan



MYSTERY FARM NO. 126—Are you able to identify the farm shown in the above photo? If so, please call The Standard office, GR 5-3581. The owner is entitled to a mounted photo free of charge if he will call at The Standard office on or before Saturday. This is the 126th in the series of farm photos designated as "mystery farms" until our readers identify them.

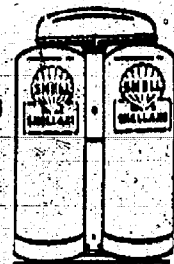


Illinois is one of the great and leading states of the nation. Its agriculture is important and varied, its mining industry is large and valuable, its financial, whole-sale and manufacturing interests are immense and valuable.

**When you think of bottled gas, think of SHELLANE—**

**only a few pennies a day to use**

Shellane Bottled Gas is a product of the Shell Oil Company



**HILLTOP PLUMBING**

BOB SHEARS

201 S. Main St. Ph. GR 5-7201

## NOTICE

In order that we and our employees may enjoy the day with our families, we will be

**CLOSED ALL DAY  
THANKSGIVING DAY**

**KNOLL'S ASHLAND SERVICE  
ALBER MOTOR SALES  
HANKERD'S PURE OIL SERVICE  
DETLING'S MARATHON SERVICE  
FOOR MOBIL SERVICE**

Dick Clark says  
**KEEPSAKE**  
is breaking  
all records!

Keepsake Diamond Rings, nationally advertised on ABC-TV by Dick Clark, are the choice of America's loveliest brides.

For finest beauty and quality always look for the name "Keepsake" in the ring and on the tag.

**Keepsake**  
DIAMOND RINGS

EASY CREDIT TERMS



**OAKLAND \$125.00**  
Wedding Ring \$50.00

**BELFAST \$350.00**  
Also \$450 and \$750  
Wedding Ring \$125.00

**Winans Jewelry Store**

**SERVICE  
Is Our Business**

- ★ Aureomycin Crumbles  
For Sheep and Cattle
- ★ Combiotic & Penicillin
- ★ Sulmet - Herd Treatment
- ★ Surelift Crumbles  
... An Antibiotic Feed

**BLAESS  
Elevator Co.**

Phone GR 9-6511



Chelsea, Mich.

### Servicesmen's Corner

**Pvt. Merle Carr**

**Participates in Recent  
Marine Amphib Exercise**

Coast of California—Marine Pvt. Merle L. Carr, son of Mr. and Mrs. Gerald L. Carr of 9021 Beaman Rd., Chelsea, Mich., is serving with the First Marine Division, Camp Pendleton, Calif., which recently participated in a huge amphibious operation, known as Exercise "Pack Mule," off the coast of California.

Navy and Marine units totaling 41 ships and 15,000 men were involved in the operation held from Oct. 20 through Nov. 4. Highlights of the involved operation included an actual landing by a crack Marine battalion against a mock-missile installation on San Clemente Island; laying and use of an underwater wire telephone system; and the installation and use of a special system to facilitate the delivery of fuel directly from tankers to the forces.

Most men, we are afraid, have a good idea of how important they are.

## + Services in Our Churches +

**CONGREGATIONAL CHURCH**  
The Rev. Philip Rusten, Pastor  
Wednesday, Nov. 23—  
8:00 p.m.—United Thanksgiving service at the Methodist Home chapel.

Saturday, Nov. 26—  
10:00 a.m.—Pilgrim Fellowship conference at Olivet.

Sunday, Nov. 27—  
10:00 a.m.—Worship service and church school. Observance of first Sunday in Advent.

Monday, Nov. 28—  
7:00 p.m.—First meeting for study of the church's life, Group II.

Wednesday, Nov. 30—  
4:00 p.m.—Junior choir rehearsal.

Thursday, Dec. 1—  
7:00 p.m.—Youth choir rehearsal.

7:30 p.m.—Senior choir rehearsal.

**ST. BARNABAS' EPISCOPAL CHURCH**  
The Rev. Allan W. Reed, Vicar

Wednesday, Nov. 23—  
8:00 p.m.—United Thanksgiving service at the Methodist Home chapel.

Thursday, Nov. 24—  
9:00 a.m.—Holy Communion for Thanksgiving Day. The choir will sing.

Sunday, Nov. 27—  
10: a.m.—Morning Prayer, sermon and church school. Note the new time for the service, an hour earlier.

**FIRST METHODIST CHURCH**  
The Rev. S. D. Kinde, Pastor

Wednesday, Nov. 23—  
8:00 p.m.—United community Thanksgiving service at the Methodist Home chapel.

Saturday, Nov. 26—  
10:30 a.m.—Junior choir rehearsal.

Sunday, Nov. 27—  
10:00 a.m.—Nursery, kindergarten, primary and junior department Sunday school classes.

10:00 a.m.—Worship service.

11:00 a.m.—Fellowship coffee hour.

11:10 a.m.—Junior high, senior high and adult department Sunday school classes.

6:00 p.m.—Junior High MYF.

7:00 p.m.—Senior High MYF.

Monday, Nov. 28—  
8:00 p.m.—Commission on Education meeting in the educational unit.

Thursday, Dec. 1—  
7:00-9:00 p.m.—Festival of Booths in the church social center. Program at 7 p.m. by the Junior department of the Sunday school.

**FIRST ASSEMBLY OF GOD CHURCH**  
14900 Old US-12

The Rev. James O. Sutton, Sr., Pastor

Wednesday, Nov. 23—  
8:00 p.m.—United Thanksgiving service at the Methodist Home chapel.

Sunday, Nov. 27—  
9:45 a.m.—Sunday school.

11:00 a.m.—Morning Worship service.

6:30 p.m.—Young people's meeting.

7:30 p.m.—Evangelistic service.

Prayer meeting Wednesdays at 10:30 a.m. and 7:30 p.m.

Bible study Thursdays at 10:30 a.m.

**FIRST CHURCH OF CHRIST SCIENTIST**  
1883 Washtenaw Ave., Ann Arbor

Sunday, Nov. 27—  
9:30 a.m.—Sunday school.

11:00 a.m.—Morning service. Lesson-sermon: "Ancient and Modern Necromancy, alias Mesmerism and Hypnotism, Denounced." Golden text: "Take heed that no man deceive you." Matt. 24:4.

**METHODIST HOME CHAPEL**  
The Rev. E. J. Weiss, Pastor

The Rev. J. E. Stanford, Chaplain

Sunday, Nov. 27—  
8:00 a.m.—Worship service.

Wednesday, Nov. 23—  
United Thanksgiving service.

**GREGORY BAPTIST CHURCH**  
The Rev. W. T. Cochran, Pastor

Sunday, Nov. 27—  
10:00 a.m.—Morning worship.

11:15 a.m.—Sunday school.

6:45 p.m.—Training Union.

8:00 p.m.—Evening worship.

**CHURCH OF CHRIST**  
M-82, 1/4 Mile South of Old US-12

Stanley Hudgins, Minister

Sunday, Nov. 27—  
10:00 a.m.—Sunday school and Bible study.

11:00 a.m.—Morning worship.

6:00 p.m.—Evening worship service.

**NORTH SHARON PRESBYTERIAN CHURCH**  
Sylvan and Washburn Roads

The Rev. Carleen Carpenter, Pastor

Sunday, Nov. 27—  
10:00 a.m.—Sunday school.

11:00 a.m.—Worship service.

7:00 p.m.—Young people's meeting.

7:30 p.m.—Evening worship.

Prayer meeting Wednesdays at 7:45 p.m.

**UNADILLA PRESBYTERIAN CHURCH**  
The Rev. William Yauch, Pastor

Sunday, Nov. 27—  
10:30 a.m.—Worship service.

11:30 a.m.—Sunday school.

**WATERLOO VILLAGE CHURCH**  
(Evangelical United Brethren)

The Rev. Wilbur Silvernail, Pastor

Sunday, Nov. 27—  
10:00 a.m.—Sunday school.

11:15 a.m.—Worship service.

**ST. PAUL'S EVANGELICAL AND REFORMED CHURCH**  
The Rev. Paul M. Schnake, Pastor

Wednesday, Nov. 23—  
8:00 p.m.—United Thanksgiving service at the Methodist Home chapel.

Friday, Nov. 25—  
7:00 p.m.—Mailing committee at the church hall.

Sunday, Nov. 27—  
First Advent Sunday.

8:15 a.m.—Early worship service.

9:30 a.m.—Sunday school.

10:45 a.m.—Regular worship service.

Wednesday, Nov. 30—  
8:00 p.m.—Willing Workers Circle at the church.

Thursday, Dec. 1—  
7:30 p.m.—Junior choir rehearsal.

8:30 p.m.—Senior choir rehearsal.

**BETHEL EVANGELICAL AND REFORMED CHURCH**  
(United Church of Christ)

Freedom Township

The Rev. T. W. Menzel, Pastor

Wednesday, Nov. 23—  
8:00 p.m.—United Thanksgiving service at the Manchester Methodist church.

Sunday, Nov. 27—  
10:00 a.m.—Worship service.

11:00 a.m.—Sunday school.

Tuesday, Nov. 28—  
8:00 p.m.—Family night at the church.

Wednesday, Nov. 30—  
8:30 p.m.—Membership class.

There will be no catechism class Saturday, Nov. 26.

**SALEM GROVE METHODIST CHURCH**  
US-12 at Notten Road

The Rev. Harry Fyscher, Pastor

Sunday, Nov. 27—  
10:00 a.m.—Sunday school.

11:15 a.m.—Worship service.

Thursday, Dec. 1—  
7:00 p.m.—Family Night potluck supper.

**ST. JOHN'S EVANGELICAL AND REFORMED CHURCH**  
(United Church of Christ)

The Rev. Donald H. Voss, Pastor

(Rogers Corners)

Sunday, Nov. 27—  
9:30 a.m.—Worship service.

10:30 a.m.—Sunday school.

**ZION LUTHERAN CHURCH**  
(Rogers Corners)

The Rev. O. J. Renner, Pastor

Wednesday, Nov. 23—  
7:30 p.m.—Thanksgiving service and Holy Communion. Service preceded by 40-minute recording of the cantata, "Una Sancta" by eight college choirs who sang at the April merger meeting. Sermon topic: "Prayerful Thanksgiving."

Thursday, Nov. 24—  
7:30 p.m.—Luther League meeting at the parish hall. Speaker: Mrs. D. Vogel. Topic: "Dating and Going Steady."

Saturday, Nov. 26—  
9:30 a.m.—Junior catechism class.

9:45 a.m.—Senior catechism class.

Sunday, Nov. 27—  
9:15 a.m.—Sunday school.

10:30 a.m.—Service and hymn festival sponsored by the Sunday school and conducted by junior and senior choirs. Subject of pastor's talk: "Our Rich Heritage of hymns."

Monday, Nov. 28—  
7:00 p.m.—Junior choir rehearsal.

8:00 p.m.—Senior choir rehearsal.

Thursday, Dec. 1—  
8:00 p.m.—Brotherhood meeting.

**FOR MODERN HOME COMFORT**  
...you need a streamlined heating system!

A new forced-air furnace requires a carefully engineered duct and pipe system for top efficiency. Make sure you buy a heating system, not just a furnace.

For the best deal... phone a heating ENGINEER... your WILLIAMSON dealer.

**your WILLIAMSON dealer**

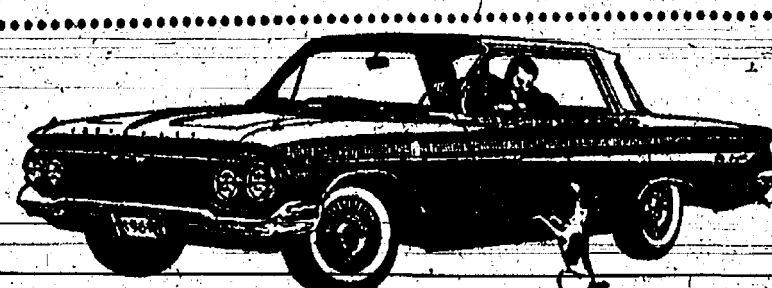
**JOHN W. STEELE—Sheet Metal**

521 Garfield Chelsea, Mich. Phone GR 9-4451

Easy way to do your new-car sampling—

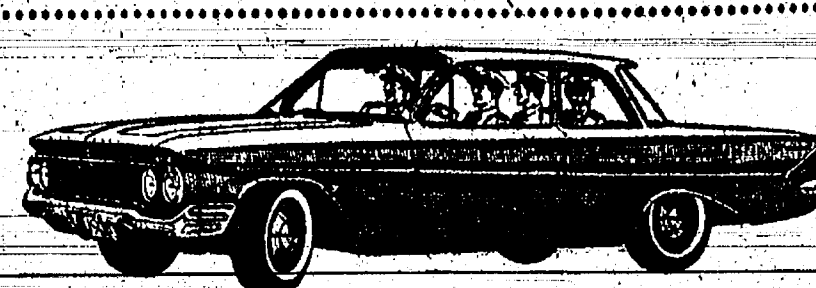
**Drive Chevy once around the block at your Chevrolet dealer's one-stop shopping center!**

Just drop in and take a drive in one of the 30 spanking new '61 models your Chevy dealer now offers under the same roof. With every drive, your dealer is giving away free Dinah Shore Christmas records while they last. So hurry! And you'll find that here's the easy, one-stop way to shop for the car you want. There's a model to suit almost any taste or need—at a price to suit almost any budget. There's a whole crew of new Chevy Corvairs, including four family-lovin' wagons. New Biscaynes—the lowest priced full-size Chevrolets. Popular Bel Airs. Sumptuous Impalas. And America's only true sports car—the Corvette. Come on in and pick your new car the easy way—on a one-stop shopping tour!



New '61 Chevrolet IMPALA SPORT SEDAN

You'll see five models in the '61 Impala series—the most elegant Chevrolets of all. They're sensationally sensible from their more parkable out size to their remarkably roomy in size. And note that trim new roof line.



New '61 Chevrolet 2-DOOR BEL AIR SEDAN

These beautiful Bel Airs, priced just above the thriftest full-size Chevrolets, bring you newness you can use. Roomier dimensions reach right back to the easier loading trunk that lets you pile baggage 15% higher.



New lower priced '61 CORVAIR 500 CLUB COUPE

See what Corvair's got in store for you in '61! Thriftier sedans and coupes with nearly 12% more room, up front for luggage. That rear engine's spunkier, too, with a gas-saving new axle ratio to go with it.



New '61 Corvair 700 LAKEWOOD STATION WAGON

There's room for almost everything but antifreeze in these new one-and-only 6-passenger Lakewoods. And they're the only wagons with lockable trunk under the hood. Be sure to see the new Greenbriers, too.



New '61 Chevrolet 2-DOOR BISCAYNE 6 NOW—Big-Car Comfort at Small-Car Prices

These new Biscayne 6's—the lowest priced full-size Chevrolets—let you save money in a big way, yet give you a full measure of Chevy's new roominess—such things as higher easy chair seats, larger door openings, more leg room in front, more foot room in the rear.

\*Sales available as V8 models

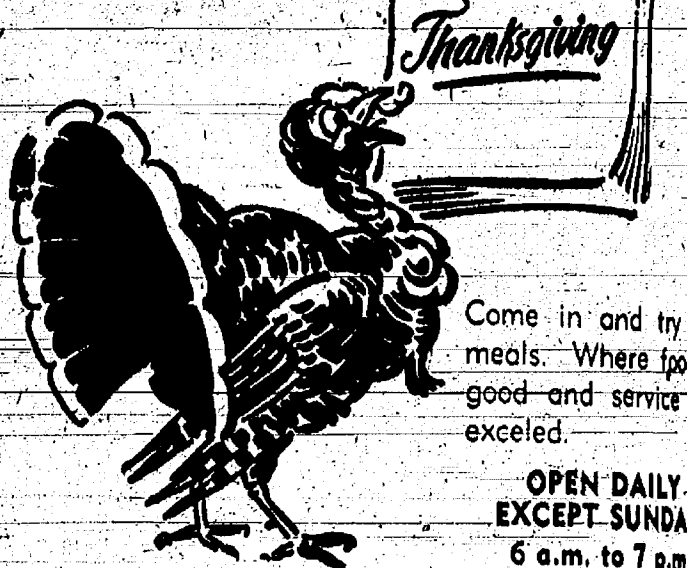
See the Greatest Show on Worth at Your Chevrolet Dealer's

**SPAULDING CHEVROLET SALES & SERVICE**

CHELSEA, MICHIGAN

**NOTICE!**  
**FINAL DAY**  
**FOR RAKING LEAVES**  
**INTO THE STREETS**  
will be  
**SATURDAY, NOV. 26**  
**DEPT. OF PUBLIC WORKS**  
Kellie Allen, Superintendent

**CLOSED**  
**THANKSGIVING**  
**DAY**



Come in and try our meals. Where food is good and service is excellent.

**OPEN DAILY EXCEPT SUNDAY**  
6 a.m. to 7 p.m.  
Fridays and Saturdays until 7:30 p.m.

**CHELSEA RESTAURANT**

JOHN and ELLA McMILLAN





**CHERRY PIE CHAMPIONS**—Susan Besenick of Dexter won first place in the Washtenaw County Cherry Pie Baking Contest at Michigan Consolidated Gas Co., Saturday afternoon. Patrice Murdock (at right) also of Dexter, was runner-up

and Judy Clark of Milan (at left) was third place winner. Miss Besenick will compete in the state contest, Jan. 20-27, at Grand Rapids. (Ann Arbor News Photo.)

## Dexter Girls Win County Cherry Pie Baking Contest

Dexter girls won first and second place honors in the Washtenaw County Cherry Pie Baking Contest in the Home Service Auditorium of Michigan Consolidated Gas Co. at Ann Arbor Saturday afternoon. (See photo page six.)

Sue Besenick was first place winner. She was awarded a \$25 Government savings bond and became

eligible to compete in the state contest to be held Jan. 20-27 at Grand Rapids.

Patrice Murdock was the second place winner and she and the third place winner, Judy Clark of Milan, were given cook books as prizes.

Other girls from this area who participated in the contest are Diane Snyder of 1840 Dancer Rd., a student at Chelsea High school, and Mary Ellen Hassett, 6734 Lamb Rd., Manchester, a member of the Jolly Farmerettes 4-H club.

The Dexter girls are in the home economics classes of Mrs. Nancy Anderson and Mrs. Sheryl Vanderploeg at Dexter High school. The Chelsea contestant's home economics teacher is Mrs. Barbara Straker of Chelsea High school.

Winners of the state contests will compete in the national contest at Chicago on Feb. 22. Judges for the contest at Ann Arbor were Miss Esther Koch, cafeteria director of the Ann Arbor schools; Miss Roberta Lang, dietitian at Couzens Hall at the U. of M.; and Miss Bonnie Schuchardt of the Women's Department of the Ann Arbor News.

Contestants who participated were from Ann Arbor, Chelsea, Dexter, Milan, Saline, Ypsilanti and Manchester schools and from 4-H clubs of the county.

Miss Lynne Morency is home service director for Michigan Consolidated Gas Co. at Ann Arbor.

### FALSE TEETH FOR COWS

Dallas, Tex.—A good set of false teeth may be all old bossy needs to add a few more useful years to her life.

Dr. Nelson Cruz Arias, a dentist from Cali, Colombia, said that "by wearing false teeth, a cow can start gaining weight again and have several more years of useful life." He had fitted a number of cattle with false teeth in Colombia and in one case a 15-year-old cow gained 45 pounds after getting the teeth.

The doctor made this statement in Dallas, Texas while attending the Pan-American Livestock Show. He hopes to get a patent in the United States for a device that will keep the cow's mouth open while being fitted for false teeth.

The chief industries of the state of Oregon include fruit growing, fishing and agriculture. Its lumber industry is important; its salmon industry is very large. It also produces hops in large quantities.

## CAREFUL DRIVERS Save Money on this AUTO INSURANCE

If you qualify as a careful driver, you can save \$ \$ \$ for the best automobile insurance money can buy, and you pay the premium for only six months at a time. You are also assured of fast and fair claims service throughout the United States and Canada.

Stop-in or phone us! We can quickly determine if you qualify and how much you, as a careful driver, will save.

**America's Fore Loyalty Group**  
A Dependable Capital Stock Company  
**SEABOARD FIRE & MARINE INSURANCE CO.**  
**Dan Maroney**  
Phone GR 9-5631  
TOTAL FIRE, MARINE AND CASUALTY COVERAGES

## Mrs. Warren Eisenbeiser Is Delegate to National Girl Scout Convention

Mrs. Warren Eisenbeiser returned Saturday from St. Louis, Mo., where she attended the national Girl Scouts convention, Nov. 14-18.

Mrs. Eisenbeiser is a leader of Chelsea's Mariner Troop 71 and also leads a new Brownie troop. The convention, held at Kiel Auditorium, was attended by 4,700 delegates from throughout the country. Also at the convention were approximately 2,000 visitors.

Mrs. Eisenbeiser was one of 12 delegates of the Huron Valley Girl Scout Council.

Mrs. Eisenbeiser said that a highlight of the convention was a talk on Friday by Lady Baden-Powell, founder of the Girl Guides of England, direct from England by transatlantic telephone. Girl Guides in England sang "Happy Birthday" to the American Girl Scouts in observance of the approaching 60th anniversary of the founding of Girl Scouting in America.

Lady Baden-Powell's husband was the founder of the Boy Scouts. At the election held at the convention, two Ann Arbor women, Mrs. James Kennedy and Mrs. W. J. Hether, were named president and vice-president, respectively, of Girl Scout Region VII, which includes Michigan, Illinois, Wisconsin and Indiana.

Elected national president at the convention was Mrs. Charles Culmer of Libertyville, Ind.

It would be a nice world if everyone behaved like they acted in church.

## CUB SCOUT NEWS

Six dens were given awards for 100 per cent parent participation at the meeting of Cub Scout Pack No. 125, held Thursday evening at South school.

Cubmaster W. J. Grossman presided at the meeting. Roll call showed the following dens qualified for parent attendance awards: Mrs. Maynard Porter's Den No. 1; Mrs. May Tish's Den 4; Mrs. Vernon Parks' Den 6; Mrs. Gerry Blackwell's Den 7; Mrs. Richard Smith's Den 9; and Mrs. Betty Worden's Webelos group.

Cubmaster Grossman presented awards of patches, gold arrows, silver arrows and bobcat pins to the Cub Scouts who had earned them and he announced the November theme for Cub Scout work is "New Worlds."

Exhibits carrying out the theme were displayed by Dens 2, 5, 6, 7 and the Webelos group. Skits were presented by Mrs. Benjamin Bower's Den 2, Mrs. Gerry Blackwell's Den 7, and Mrs. Lois Marshall's Den 10.

It was announced that the next pack meeting will be held Dec. 15.

## PTA Meets In Library at High School

PTA members held their November meeting Wednesday evening in the Chelsea High school library. Because of National Book Week, Miss Joan Wiese, school librarian had arranged a display of children's literature and also a display of science and language books secured under the National Defense Education Act.

Miss Wiese said she welcomed the group for a meeting in the library and told PTA members she had prepared a list of information about the school libraries and invited parents to call her for information about books or reading guidance.

Guest speaker at the meeting was Mrs. Ingrid Ylsto, supervising teacher in elementary grades of Lincoln Consolidated school, Ypsilanti.

Stressing the fact that all learning is individual, she stated that learning to read must also be considered an individual skill and that a child should be accepted at his own level instead of comparing or measuring his accomplishments or progress with others. She suggested that parents might help the children at home in various ways.

Mrs. Ylsto recommended that parents read to children, even after the children are able to read themselves. She also said it is helpful (and important) to have plenty of books and other reading material in the home.

Other suggestions were that parents take their children to the library to read and be read to, and to select books to take home and read and that parents encourage children to talk at home about their experiences and ideas.

She summed up her talk by stating that the method, per se, of teaching a child to read was not as important as the room "climate" and pointed out that some teachers, as well as parents, defeat their purpose when they try to use force, threat of punishment, etc., in attempting to teach reading.

Schools and homes, she said, need lots and lots of varied materials for children of different interests and different levels of learning ability. Children, like adults, do not all have the same should be taken into consideration, Ylsto said.

especially in teaching reading, Mrs. Ylsto said. Audience interest was demonstrated in a question and answer period which continued even during the social hour while refreshments were being served.

At the regular PTA business meeting it was voted to adopt the budget which included a \$25 contribution to the Chelsea Teachers Club Scholarship fund.

PTA calendars listing school activities through January were distributed at the meeting.

Any financial expert can tell somebody else how to be budget his money.

The realities of life are often too much for the sensitive, sincere person.

Standard Want Ads Get Results

## DUTCH BULBS

Tulips, Crocus, Hyacinth, Daffodil for Your Fall Arrangements

## IMPORTED Artificial Flowers

GREEN PLANTS for Home Decorating

## LARGE POTTED PLANTS

and FRESH CUT FLOWERS for All Occasions

— ALSO — A Complete Selection of New Pottery

## SYLVAN FLOWER SHOP

716 W. Middle Chelsea, Mich. Ph. GR 5-4561 Local Delivery

## BIG THANKSGIVING DAY TV SPECTACULAR

Mohawk Carpet Mills presents NBC's Show of the Week



ROSEMARY CLOONEY in JOSE FERRER in CAROL BARNETT in DICK VAN DYKE Star in "NO PLACE LIKE HOME" a full hour of comedy and music in black and white and color on WWJ-TV CHANNEL 4 from 5:30 P.M. to 6:30 P.M.

TUNE IN FOR A WONDERFUL HOUR OF ENTERTAINMENT FOR ALL THE FAMILY

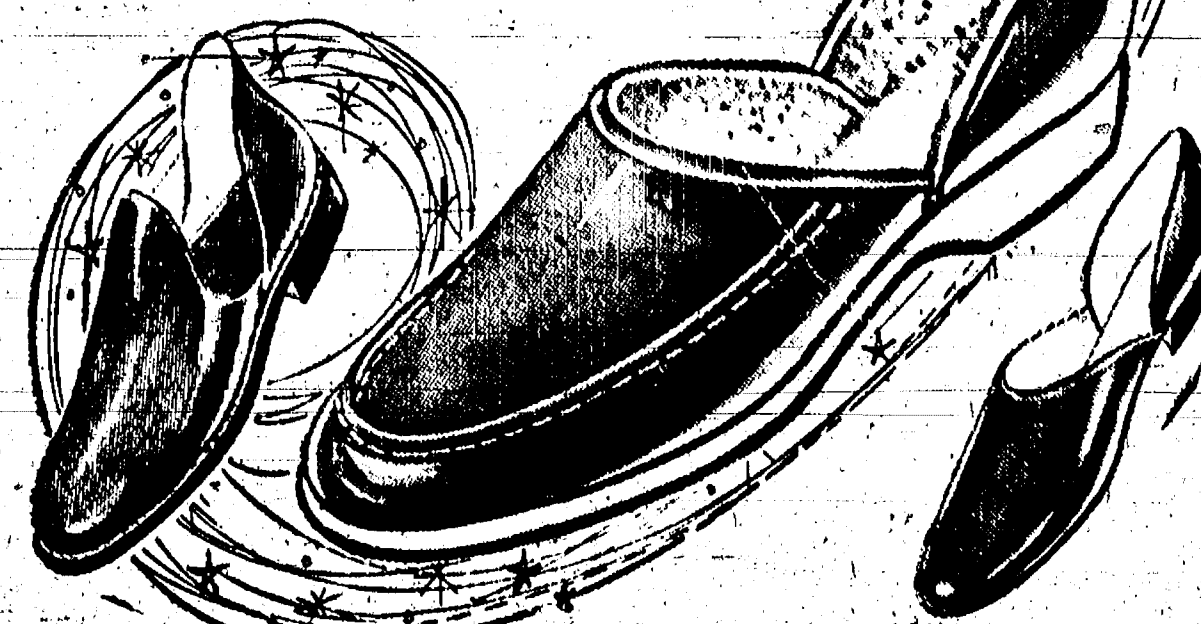
## MERKEL BROS.



## ANDERSON'S



FOR THE FAMILY for CHRISTMAS  
Fresh from Santa's pack comes this wonderful array of slippers for the whole family... snugly warm ones, interesting new styles... all bound to spark holiday cheer on Christmas morn.



**HAPPY THANKSGIVING**

In this special day of Thanksgiving let us pause to give thanks for our many blessings in this free country of ours, and for the many deep friendships we treasure.

**A. D. MAYER**  
"INSURANCE FOR EVERY NEED"  
115 PARK STREET CHELSEA, MICHIGAN  
PHONES: OFFICE GR 5-7131; RES. GR 5-4201

**Features FAMOUS BRANDS for REMEMBERED GIFTS**

17 Jewel **FAITH WATCHES** from just \$25.00

**Men's JEWELRY** as little as \$1.00

**RONSON LIGHTERS** from \$3.50

**FAITH JEWELRY** from \$1.00

**LAY-AWAY NOW FOR CHRISTMAS**

**Walter F. Kantlehner**  
JEWELER and OPTOMETRIST  
102 East Middle Street Phone GR 9-6721



RENT  
its in  
the...

SELL • BUY • TRADE • HIRE • SERVICE •  
LOST and FOUND • SERVICE • T  
HELP WANTED • EMPLOYME

WANT ADS!  
RENT  
ADE  
OPPORTUNITIES

## WANT ADS

### The Chelsea Standard

#### WANT AD RATES

PAID IN ADVANCE—All regular advertisements, 50 cents for 25 words or less, each insertion. Count each figure as a word. For more than 25 words add 2 cents per word for each insertion. "Blind" ads or box numbers add, 85c extra per insertion. CHARGE RATES—Same as cash in advance, with 15 cents bookkeeping charge if not paid before 5 p.m. Tuesday preceding publication. Pay in advance, send cash or stamps and save 15 cents. CARDS OF THANKS or MEMORIALS—Single paragraph style, \$1.00 per insertion for 50 words or less; 3 cents per word beyond 50 words. DISPLAY WANTS—15 ads—\$1.10 per column inch, single column width only. 8-point and 14-point light type only. No borders or bulleted type. Minimum—1 inch. COPY DEADLINE—5 p.m. Tuesday week of publication.

FOR SALE—Large remodeled home on South Main. Reduced again for the last time or will rent. Phone NO 5-5377. 21

## LAY-AWAY

A Small Deposit Will Hold Any Toy or Gift Until CHRISTMAS

## Chelsea Hardware

PAINTERS—Do-It-Yourselfers! Have Paint You Want Colored? We will tint any color size or brand you may have. Merkel Brothers. 141f

## SEPTIC TANK

CLEANING  
Prompt, reliable service by a local firm you know you can depend upon.

## FREE ESTIMATES

## BOLLINGER

Sanitation Service  
Licensed by Mich. Health Dept. Phone GR 9-5371 Chelsea, Mich. 71f

## BUILDING LOTS

1 acre or more on blacktop

## Kern Real Estate

622 South Main St. Chelsea, Mich. Phone GR 9-7681 or GR 9-4605 141f

## NAPOLEON LIVESTOCK

COMMISSION CO.  
Located on M-50, Napoleon, Mich.

## AUCTION

Every Monday, 2:00 p.m.  
Buyers for all kinds of livestock. Dairy cattle tested sale daily. State approved to handle Bangs Cows.

For Pickup Service, call Napoleon, Keystone 6-4201

## ORIN and DALE

HESLSCHWERDT  
FOR RENT—Partially furnished upstairs apartment, 3 rooms and bath. Heat furnished. Phone GR 9-5441 after 6 p.m. 181f

APPLES FOR SALE—12 varieties. Bring containers. No Sunday sales. E. Heintinger, 2571 No. Lima Center Rd., Phone GR 9-7610. 131f

## Gulf Oil Products

Fuel Oil and Gasoline.

## ALBER OIL CO.

Dexter, Mich.  
Call Collect: HA 6-4601 or HA 6-8517 91f

## WANT ADS

IT WILL PAY YOU \$—to drive out and look at our used car selection. Ample parking space. Chelsea Implement Co. GR 6-0111. 161f

## GAMBLES

## Rental Equipment

FLOOR SANDER  
FLOOR EDGER  
FLOOR POLISHER  
HAND SANDERS  
(Oscillating type)  
WALLPAPER STEAMER

Rent this new, modern equipment by hour or day.

## GAMBLES

110 N. Main St.  
Phone Chelsea GR 9-2311 41f

FABRICON WEAVING—Repair burns, moth holes, cuts, tears. Save that garment. Reasonable prices. 218 East street. Phone GR 9-4072. 161f

## Real Estate For Sale

2 bedroom home on 1 acre in Chelsea. \$2500.00 down.

3 Bedroom Ranch-type home, new, aluminum windows and doors, garage, glassed in porch.

Also, 3 room and bath apt. for rent with garage.

## Kern Real Estate

GR 9-7681 121f

DO YOUR CHRISTMAS SHOPPING the Fuller Brush way, in the comfort of your home. Phone Claude Detrick, your new Fuller Dealer. GR 9-4695 or GR 9-4872. 23

## FARM LOANS!

Buy land, livestock, refinance. Free Appraisals—Fast Service

## LAND BANK

ROBERT HALL, MGR.  
2221 Jackson Ave.  
Ann Arbor, Mich.  
Telephone NOrmandy 5-6130 241f

FORD TRACTORS and equipment. Also, New Holland machinery. Sales and service. Cobb & Schreier, Stockbridge. Phone Ulysses 1-4626. 411f

PAINTING, paper hanging and carpenter work. G. G. Hopper. Phone days, GR 6-5581; evenings, Gregory Alpine 6-2148. 441f

## CLOGGED

SEWER  
Reynolds Sewer Service

We Clean Sewers Without Digging. Drains Cleaned Electrically. FREE ESTIMATES

2-YEAR GUARANTEE  
Phone Ann Arbor 2-5277  
Sewer Cleaning Is Our Business—Not a sideline! 381f

FOR SALE—New snow tires. 6.70x15 at \$13.95. 7.50x14 at \$16.95. 6.00x16 at \$14.95; all taxes included. Other sizes priced accordingly. Extra 15-inch wheels, \$2.00. Knowles Used Cars and Parts, 6270 Whitmore Lake Rd., Telephone NO 5-3915. 48

WANTED—Employed family with trailer to help with chores on farm close to Chelsea. Write Box NO 17, care of Chelsea Standard. 21

Let us revive the beauty of your rugs, carpets, furniture. Our method is endorsed by leading rugers and manufacturers. Free estimates. Satisfaction guaranteed.

Modern Rug & Upholstery Cleaners  
Phone GR 5-8136 881f

LANDRAGE BOAR—Service area. From excellent registered stock. Highly recommended for cross breeding. \$50. Phone GR 9-3872. 21

Grinder Set-Up  
EXPERIENCED on the following grinding machines:

Blanchard Rotary Surface  
Barnes Verticle Hone  
Cincinnati Centerless  
Bryant Hone and Face  
Norton O. D.

Must be able to read blueprints and precision measuring instruments.

Phone Ypsilanti HU 3-4461 or apply at

Gar Wood Industries  
PUMP DIVISION

800 LOWELL YPSILANTI 21

FURNISHED—Year-around modern 2-bedroom house at Half Moon Lake. \$75 per month. Phone GR 5-4372. Cecil Herman. 21

FOR SALE—Set of French doors, plus hardware. 2 outside doors and glass. Full set of kitchen cupboards. Some used furniture. Call GR 9-7081. 21f

## WANT ADS

WE SELL AND INSTALL  
MOR-SUN  
Gas or Oil Furnaces

and  
Conversion Burners

Before You Buy—See Us.  
We can save you money.

Hours: Daily, 8 a.m. to 5:30 p.m.  
Fri., 8 a.m. to 5 p.m.

Emergency service calls:  
GR 5-8175

Hilltop Plumbing  
HEATING & ELECTRICAL  
CONTRACTORS

Authorized Dealer for Mor-Sun  
Furnaces and Air Conditioners

201 South Main St., Chelsea, Mich.  
Phone GR 5-7201 151f

FOR RENT—Pleasant 2-bedroom ranch type home 2 miles east of Chelsea, 1/4 mile off US-12. Opportunity to earn rent. Phone GR 9-7121. 21

HOUSE FOR SALE—3-apartment house with 8-car garage, full basement, good location; close to churches, schools and downtown. For appointment to see phone GR 9-3291. 511f

Frigitaire - Norge  
APPLIANCES

Washers - Dryers - Ranges  
Freezers - Refrigerators  
Built-in Kitchen Units

ZENITH  
TV - Radios - Hi-Fi

FLOOR COVERING  
and  
Complete Household Furnishings

MEABON'S  
TV, Furn. & Appl.

105 N. Main Phone GR 5-5191 141f

CUSTOM SLIP COVER work. You furnish material, we furnish labor. Rose Young, Gregory, Alpine 6-2445. 21

APARTMENT FOR RENT—First floor. Stove, refrigerator and heat furnished. Phone GR 9-1891. 191f

REAL ESTATE

2-bedroom house. All aluminum storms and screens. Several out-buildings. On 5 acres, mostly frontage on blacktop. Tractor and some small pools included.

5-bedroom home 6 miles out on nearly 5 acres land. Beautiful country home. Deep well. New oil furnace.

In Chelsea, newly - remodeled 3-bedroom home. New gas furnace. Large lot.

Large brick home near downtown.

MINNIE SCRIPPER, BROKER  
Chelsea Phone GR 9-2789  
If no answer call GR 5-4311. 191f

FOR RENT—Furnished apartment. Main floor, 3 rooms. Private entrance. Heating, privileges. At 413 Madison St. To see phone NO 5-5801. 201f

WANTED—Employed family with trailer to help with chores on farm close to Chelsea. Write Box NO 17, care of Chelsea Standard. 21

Let us revive the beauty of your rugs, carpets, furniture. Our method is endorsed by leading rugers and manufacturers. Free estimates. Satisfaction guaranteed.

Modern Rug & Upholstery Cleaners  
Phone GR 5-8136 881f

LANDRAGE BOAR—Service area. From excellent registered stock. Highly recommended for cross breeding. \$50. Phone GR 9-3872. 21

Grinder Set-Up  
EXPERIENCED on the following grinding machines:

Blanchard Rotary Surface  
Barnes Verticle Hone  
Cincinnati Centerless  
Bryant Hone and Face  
Norton O. D.

Must be able to read blueprints and precision measuring instruments.

Phone Ypsilanti HU 3-4461 or apply at

Gar Wood Industries  
PUMP DIVISION

800 LOWELL YPSILANTI 21

FURNISHED—Year-around modern 2-bedroom house at Half Moon Lake. \$75 per month. Phone GR 5-4372. Cecil Herman. 21

FOR SALE—Set of French doors, plus hardware. 2 outside doors and glass. Full set of kitchen cupboards. Some used furniture. Call GR 9-7081. 21f

## TIPS



"That's just great! Now I'll have to look for a plumber in the Standard Want Ads!"

## WANT ADS

FOR SALE—21" table model TV set with 21" screen. In very good condition. Phone GR 5-8255. 21

## GAMBLES

LAY-AWAY NOW  
FOR CHRISTMAS.

A small deposit will hold any item.

See our Toy Land,  
Shop All Departments

Always Better Buys  
at Gambles. 24

HOUSE FOR RENT—4 rooms and bath 8x20 glassed-in porch, garage. Contact Albert Wolpert 620 Wolverine St., at the house called Manchester. 21

FOR RENT—Apartment, upper. All utilities furnished. \$40 per mo. Phone GR 5-3391. 22

Grave Blankets—\$5 up

Evergreen Wreaths  
\$2.50 up

Cemetery Vases \$2 up

OTHER ASSORTED GREENS

Chelsea Greenhouse  
PHONE GR 9-5071 25

FOR SALE—Davenport and chair end tables, refrigerator, 2 vacuum cleaners. Phone GR 5-4837. 21

FOR RENT—Small house east of Chelsea on Old US-12. Phone GR 5-7984. 21

SAND - GRAVEL

STONE - FILL DIRT

Basement Digging - Bulldozing  
Crane Work - Beach Building

FREE ESTIMATES

BOB FITZSIMMONS

North Lake  
Phone Chelsea GR 9-5701 881f

MOTHERS, may I baby sit for you while you do your Christmas shopping? Gerry Blackwell, Phone GR 5-8594. 21

FOR RENT—Second floor apartment. Two rooms and bath. Fully furnished. Utilities included. Call after 3:30. GR 9-2561. 21

## - FOR SALE -

FIVE-ROOM HOUSE, 3 miles out. Oil furnace, 2-car garage, about 3-acre lot. Price \$8,500; \$1,500 down.

220-ACRE FARM—Well located. Good buildings. Price, \$38,500.

TWO BEDROOM MODERN COUNTRY HOME—Fireplace, full basement with recreation room, oil furnace, corner lot, garden spot. \$12,500. Reasonable down payment.

119-ACRE DAIRY FARM. 4-bedroom house. 76-foot hip-roof barn. Large silo. Attached milk house. Bargain at \$18,500.

NEAR MUNITH. 30-acre farm. Modern 2-bedroom house. Barn and chicken house. \$8,500 cash.

CAVANAUGH LAKE modern, 6 rooms. Pine-paneled living room, large enclosed porch overlooking lake, full basement, recreation room, oil furnace, garage, excellent beach and lot, road in back. Priced for quick sale, \$15,000. Part down.

List your real estate with R. D. Miller for fast, efficient service.

HAVE BUYERS FOR CHELSEA HOMES.

## R. D. MILLER

REAL ESTATE BROKER  
Office: 15775 Cavanaugh Lake Road  
Post Office Box 388 Chelsea, Michigan  
Phone: GR 9-5892

## WANT ADS

SEE OUR CHRISTMAS display of Avon products and shop at home. Call Ruth Wilkerson, GR 5-6741. 21

## Hank's Refrigeration

Home Appliance Service  
Phone GR 9-6711 191f

FOR RENT—Remodeled house. Has 2 bedrooms. Fully insulated. Gas furnace. Phone GR 9-5773. 21

Digging  
For Septic Tanks  
And Drain Fields

With the addition of our new power digging equipment we are now able to offer you complete service.

Septic tanks from \$60 gal. to 2,000 gal. available for prompt installation.

Hours: Daily, 8 a.m. to 5:30 p.m.  
Fri., 8 a.m. to 5 p.m.

Emergency service calls:  
GR 5-8175

HILLTOP PLUMBING

BOB SHEARS  
201 S. Main Phone GR 5-7201 151f

LOST—Boy's glasses in a brown hard case, somewhere on S. Main St. near Summit. Phone Rev. Schnake, GR 9-2531. 21

For Sale Special

2-Family Apt. Home.  
New gas furnace. New hot water heater. 1 block from business section. Close to churches. Close to school. Small down payment.

Kern Real Estate

Phone GR 9-7681 or GR 5-4605. 121f

FOR SALE—Gelding pony. Broken for riding and driving. 8 years old. Saddle, bridle and halter included in price. \$175. E. Tison. Phone GR 9-2474. 21

Pittsburgh Paints

OVER 3,000 COLORS

Chelsea Hardware

181f

## WANT ADS

FOR SALE—4'x6' picture window, complete. Phone GR 9-5778. 21

## REAL ESTATE

NEW LISTING—3-bedroom large family-size kitchen. Carpeted living room and dining room. Attached garage. Large lot.

BIRCH KITCHEN with built-in range and oven units. Three bedrooms. Attached garage. Newly redecorated.

NEW 3-BEDROOM RANCH—Built-in dishwasher. One and one-half baths. Large area for future recreation room.

COUNTRY HOME 2 miles out. A beautiful spot to raise a family.

CEDAR LAKE LOT with lake privileges.

ONE-ACRE LOT on blacktop road 4 miles east of town.

Clarence Wood  
840 Planders St.  
Greenwood 9-4603  
RUDY SCHNEIDER, BROKER  
NOrmandy 5-0662. 21

## RESINOL

Masonry Waterproofing. Paint with General Electric Silicone. Guaranteed 5 years.

Regular \$3.40 per gal.  
Now \$4.99

## Chelsea Hardware

WANTED TO BUY—Used heating stove for wood or coal. Phone GR 9-3502. 21

## USED CAR SALE

ALL PRICES MARKED DOWN

We are continuing to offer Big Savings during the fourth week of our November Clearance Sale. Here are 5 of the 20 A-1 cars that will save you from \$80.00 - \$250.00.

56 MERCURY 2-dr. hardtop. Priced at wholesale. Was \$795. Now \$695

59 RAMBLER wagon. A one-owner car. Was \$1,595. Now \$1,395

58 FORD 4-dr. sedan. No rust and good tires. Was \$1,395. Now \$1,295

60 FORD. Save \$1,000 on this one. New car guarantee. Was \$3,269.94. Now \$2,295

52 FORD 4-dr. Good transportation car. Was \$395. Now \$195

We have many other fine cars and trucks. Come in and if you don't see what you are looking for give us a call.

Palmer Motor Sales, Inc.  
Chelsea GR 5-3281 21

BULLDOZING

For Prompt Service - Quality Work - DICK KISS

8945 Wernker Rd. Chelsea, Mich. Phone GR 5-7192

If no answer call GR 5-7562 331f

FOR RENT—Nicely furnished apt. overlooking Cavanaugh Lake. Tile bath, built-in tub and shower. 857 Cavanaugh Lake. \$50 a mo. 21

Sand-Gravel-Black Dirt

BULLDOZING - DIGGING  
BASEMENTS - DITCHING

C. Trinkle & Son  
Ralph Trinkle, Owner  
12241 Scio Church Road  
Phone GR 9-1296 871f

LOT FOR SALE—South Main St. 160 ft. frontage by 420 ft. Phone GR 5-4131 or GR 9-7021. 22

Wild Bird Supplies

MIXED SEED  
SUNFLOWER SEED  
SUET CAKES  
FEEDERS

Chelsea Hardware

ZIG ZAG sewing machine (not an attachment). Makes hundreds of decorative designs. Buttons holes, sews on buttons, etc. Yours for \$63.90 balance or take on payments, \$7.10 per month. Write Box AP 22, care of Chelsea Standard. 21

FOR SALE—Rabbits, first and second cutting alfalfa hay, and straw. Phone GR 9-5161. 22

FOR SALE—Feeder cattle, around 400 lbs. Feeder lambs. Call GR 9-7681. 21f

Let a reputation of Honesty and Integrity be the guide to your next auto purchase.

SEE  
DAVE ATKINSON  
at  
Chelsea Implement Company  
Phone GR 5-5011

## Co-Op Nurseries Are Gaining

## Widespread Recognition



## Seniors Do Remarkable Job with Difficult Play

The senior class and their director, Mrs. James LaGoe, are responsible for an excellent production of "The Diary of Anne Frank" on Friday and Saturday nights.

The play is a three-level reproduction of the crowded Jewish ghetto where eight Jewish people lived secretly to escape Nazi persecution.

It is always difficult for amateurs to produce a modern tragedy, but there is no doubt concerning the success of this group.

Among the performers, Anne, and Brown, as her father, gave national performances. They highly believable characters did much to carry the mood of the message to the audience.

Among the performers, Anne, and Brown, as her father, gave national performances. They highly believable characters did much to carry the mood of the message to the audience.

The entire cast was well selected and seemed to possess an understanding of the play's contribution to the play.

The brief moments of humor and relief for both the audience and the performers.

Several scenes, each of which carried a separate mood, were handled. Act one, scene one, brought the mood for the action and was superbly done.

Among the performers, Anne, and Brown, as her father, gave national performances. They highly believable characters did much to carry the mood of the message to the audience.

The driver who uses his car to escape from reality often succeeds quite realistically.

The driver who uses his car to escape from reality often succeeds quite realistically.

The driver who uses his car to escape from reality often succeeds quite realistically.

The driver who uses his car to escape from reality often succeeds quite realistically.

The driver who uses his car to escape from reality often succeeds quite realistically.

The driver who uses his car to escape from reality often succeeds quite realistically.

The driver who uses his car to escape from reality often succeeds quite realistically.

The driver who uses his car to escape from reality often succeeds quite realistically.

The driver who uses his car to escape from reality often succeeds quite realistically.

The driver who uses his car to escape from reality often succeeds quite realistically.

The driver who uses his car to escape from reality often succeeds quite realistically.

The driver who uses his car to escape from reality often succeeds quite realistically.

The driver who uses his car to escape from reality often succeeds quite realistically.

The driver who uses his car to escape from reality often succeeds quite realistically.

The driver who uses his car to escape from reality often succeeds quite realistically.

The driver who uses his car to escape from reality often succeeds quite realistically.

The driver who uses his car to escape from reality often succeeds quite realistically.

The driver who uses his car to escape from reality often succeeds quite realistically.

The driver who uses his car to escape from reality often succeeds quite realistically.

The driver who uses his car to escape from reality often succeeds quite realistically.

The driver who uses his car to escape from reality often succeeds quite realistically.

The driver who uses his car to escape from reality often succeeds quite realistically.



## BOWLING NEWS

### Chrysler Proving Ground League

Standings as of Nov. 15

Wolverine Kegs	20	10
Frigid Products	23	11
UAW Local 1284	23	11
Floor's Service	20	10
Weber's Dairy Bar	18	9
The Pub	18	9
Frank's Bar	10	20
Dettinger's Marathon	10	20
Knoll's Ashland Service	14	22
Drewery Beer	14	22
Carlting's Black Label	13	23
Tison Motor Sales	13	23
200 series: Stevens, 215; Grounds, 215; Shaw, 211; Poertner, 207; Ottinger, 200.		
500 series: Ottinger, 558; Padham, 528; Poertner, 527; Stevens, 521; Shaw, 520; Stevens, 521; Foreman, 503.		

### Chelsea Mixed League

Standings as of Nov. 18

Jack Potts	28	8
Nine Pins	23	13
Albers Motor Sales	23	13
Town & Country	21	15
First Nites	18	18
Washington Tigers	18	18
Ball Dozers	15	21
Heydlauff's GE	12	24
Ten Pinners	12	24
Stinkers	10	26
425 series (women): A. Turner, 511; B. Pabst, 453; E. Mayne, 451; R. Winchester, 425.		
475 series (men): J. Linebaugh, 535; L. Mayne, 528; M. Packard, 513; O. Johnson, 488; C. Clark, 482; L. Kusterer, 484; F. Schumm, 482; J. Eisenman, 481.		
150 games (women): B. Pabst, 191; A. Turner, 180-174-167; E. Mayne, 150; E. Harmon, 158; B. Koch, 157; R. Winchester, 157; N. Eisenman, 156-153; V. Geer, 154; N. Simpson, 150.		
175 games (men): J. Linebaugh, 213; L. Mayne, 190; C. Clark, 188; M. Packard, 181; L. Kusterer, 178; O. Johnson, 179.		

### Senior House League

Standings as of Nov. 14

Chelsea Gridding	20	11
McKalg Dining Room	26	14
Alber Off Co.	21	19
Sylvan Center	20	16
Chelsea Mfg. No. 1	20	20
Schneider's	18	18
Stop & Shop	18	18
Spaulding Chevrolet	17	19
Chelsea Products No. 2	19	21
Chelsea Products No. 1	15	25
Chelsea Milling Co.	13	28
49ers	0	27
200 games: F. Klobuchar, 238; H. Pennington, 211; G. Knickerbocker, 206; S. Policht, 206; A. Keizer, 201; O. Johnson, 201.		
500 series: D. Larson, 584; H. Pennington, 554; S. Policht, 544; A. Keizer, 542; G. Knickerbocker, 538; F. Klobuchar, 529; O. Johnson, 529; J. Wellnitz, 519; G. Winchester, 518; H. Burnett, 514; D. Colquhoun, 511; T. Faist, 510; C. Ritter, 508; R. Liebeck, 507; G. Burnett, 506; R. McKalg, 502.		

### Junior House League

Standings as of Nov. 17

Farrell Sheet Metal	25	15
Frank's Bar	23	16
Parker's Cleaners	24	12
Sliver's Bar	22	18
Chelsea Spring	20 1/2	15 1/2
Jiffy Mixer's	20	20
Gambles	20	20
Chelsea Mfg. No. 2	18	22
Merkel Bros. Hwd.	18	20
Slocum Construction	13	23
Palmer's T-Birds	11 1/2	24 1/2
400 series: G. Harmon, 527; H. Fletcher, 522; R. Kuhl, 513; V. Hansen, 513; C. Lentz, 506; N. Fahnner, 500.		
200 games: G. Harmon, 200; D. Murphy, 204; O. Hart, 215; E. Boyce, 206; R. Devine, 203; L. Christwell, 202; S. Hayden, 200; A. Kaiser, 200.		
500 series: E. Boyce, 582; R. Ringe, 540; F. Hoffman, 530; L. Christwell, 537; O. Hart, 535; R. Devine, 532; N. Fahnner, 527; C. Popovich, 525; R. Kimes, 524; V. Hatley, 518; R. Pouty, 515; C. Slocum, 510; D. Murphy, 509; S. Hayden, 507; J. Steffer, 502.		

### Monday Night Owl League

Standings as of Nov. 14

Trinkle Excavating	23	18
Turner Electric	22	14
Foster's Men's Wear	21	15
Meyer's Finer Food	21	15
George's Tree Service	20 1/2	15 1/2
Chelsea Drug	18	18
Waterloo Garage	17	15
Chelsea State Bank	17	15
Klumpff Bros.	10	20
Chelsea-Lumber	14 1/2	21 1/2
Mich. Bell	13	23
Lightweights	13	23
200 games: Hartman, 233; Forner, 228; Wilkerson, 213.		
500 series: Hartman, 507; K. P. att, 521; B. Freysinger, 519; Wilkerson, 518; Forner, 517; Buck, 514; Foster, 501.		

### Grass Lake-Chelsea Women's League

Standings as of Nov. 18

Pabst Excavating	52	11
Niehaus Grocery	40	23
Colonial Manor	39	24
Three Sons Bar	39	24
Salt Inn	34	29
Strall & Prentice	31	32
Hank's Refrigeration	30	33
Forner's Take-Out	30	33
Dettinger's Marathon	29	37
Stell's Shell Service	28	41
A. D. Mayers, Ins.	12	44
Mayers Grocery	16	47
500 and over—M. Stofor, 510; R. DeBolt, 503.		
450 and over—D. Thelen, 484; E. Judkins, 469; W. Bahnmiller, 463; M. Briesenwischer, 453; V. Padgram, 450; B. Pabst, 441.		
400 and over—R. West, 448; G. Reed, 440; E. Weyer, 437; J. Weaver, 433; G. Baker, 428; D. Fouty, 426; B. Hatley, 420; S. Havens, 419; G. Ellola, 416; N. Neat, 413; A. Hack, 411; D. Hoop-janner, 408; J. Ambs, 407; C. Hansen, 406; D. Tlach, 407; G. Cook, 404.		
350 and over—G. Ellola, 414; 7-10; W. Furlong, 5-7; V. Matthews 4-5-10; J. Ambs, 3-10, 4-10; M. Stofor, 5-6-7, 6-10, 5-10.		

### Chelsea Junior League

Standings as of Nov. 19

High team series: Slocum Contractors, 2,240.		
High team game: Slocum Contractors, 790.		
High individual series: Gary Dresch, 555.		
High individual game: Gary Dresch, 224.		

### St. Barnabas Campaign

(Continued from page one)

We know, for sure, that the finest neighbors, friends and relatives live in this area. We can never express adequately our thanks to them; also to the Chelsea and Dexter Fire Departments, the Holloway and Sargent construction companies and all the others who in any way, helping during and after our fire. Thanks again for your kindness.

Jack, Donna and Archie Bradbury.

THANK YOU

I wish in this way to express my heartfelt thanks to my relatives and many friends and neighbors for the cards, flowers and gifts, the visits they made me during my stay at the hospital and since my return home. A special thanks to the Rev. Schinke for his visits and prayers. This will always be remembered.

Wilbert Trinkle.

CARD OF THANKS

We are sincerely grateful to friends, neighbors and relatives for their many kind acts of sympathy during our sad bereavement. Our appreciation cannot be adequately expressed.

Family of J. A. Conlan.

THANK YOU

I wish to thank my many friends and neighbors for the cards, plants and gifts and those acts of kindness extended to me and my family while was at the hospital and since my return home.

Franklin C. Gee.

If you don't believe in putting all your eggs in one basket, why do you have so much confidence in your driving ability?

### Classic League

Standings as of Nov. 17

Chelsea-Lanes	27 1/2	8 1/2
Anderson's	26	10
Palmer's T-Birds	24	12
Chelsea Milling	22	14
Wilson Dairy	20 1/2	15 1/2
Chelsea Cleaners	10	20
Jiffy Mixers	18	20
Louie's Snack Bar	14	22
Foster's Men's Wear	14	22
Chelsea Gridding	13 1/2	22 1/2
Balmer's Brake Service	12 1/2	23 1/2
Stop & Shop	10	26
High team series without handicaps: Wilson Dairy, 2,090.		
High team series with handicaps: Palmer's T-Birds, 2,154.		
High team single game without handicaps: Chelsea Gridding, 778.		
High team single game with handicaps: Palmer's T-Birds, 743.		
500 series and over: R. Hummel, 528; P. Poertner, 506.		
450 series and over: D. Eisenmann, 470; R. Johnson, 469; V. Guest, 462; M. Winchester, 456; R. Winchester, 455; B. Worden, 452; M. Scott, 451.		
400 series and over: G. Wheeler, 442; E. Waller, 442; N. Kern, 442; D. Kinsley, 439; P. Shoemaker, 433; B. Lutovsky, 432; F. Lake, 430; F. Miller, 426; B. Christwell, 421; L. Dove, 420; M. Walz, 408; M. Eder, 408; D. Annabel, 407; J. Merkel, 403.		
Splits picked up: B. Christwell, 4-5-7-9; D. Annabel, 5-9-7; P. Haas, 4-10; J. Harris, 7-4-6; R. Hummel, 4-5-10; F. Lake, 2-7; V. McClean, 5-9-7, 5-7; M. McFadden, 4-5; B. Merkel, 5-7-9; M. E. Sutter, 3-10; E. Waller, 3-10; M. Walz, 5-10; 3-10, 2-7; G. Wheeler, 5-7; B. Worden, 5-7.		

### Women's League

Standings as of Nov. 16

Chelsea-Lanes	27 1/2	8 1/2
Anderson's	26	10
Palmer's T-Birds	24	12
Chelsea Milling	22	14
Wilson Dairy	20 1/2	15 1/2
Chelsea Cleaners	10	20
Jiffy Mixers	18	20
Louie's Snack Bar	14	22
Foster's Men's Wear	14	22
Chelsea Gridding	13 1/2	22 1/2
Balmer's Brake Service	12 1/2	23 1/2
Stop & Shop	10	26
High team series without handicaps: Wilson Dairy, 2,090.		
High team series with handicaps: Palmer's T-Birds, 2,154.		
High team single game without handicaps: Chelsea Gridding, 778.		
High team single game with handicaps: Palmer's T-Birds, 743.		
500 series and over: R. Hummel, 528; P. Poertner, 506.		
450 series and over: D. Eisenmann, 470; R. Johnson, 469; V. Guest, 462; M. Winchester, 456; R. Winchester, 455; B. Worden, 452; M. Scott, 451.		
400 series and over: G. Wheeler, 442; E. Waller, 442; N. Kern, 442; D. Kinsley, 439; P. Shoemaker, 433; B. Lutovsky, 432; F. Lake, 430; F. Miller, 426; B. Christwell, 421; L. Dove, 420; M. Walz, 408; M. Eder, 408; D. Annabel, 407; J. Merkel, 403.		
Splits picked up: B. Christwell, 4-5-7-9; D. Annabel, 5-9-7; P. Haas, 4-10; J. Harris, 7-4-6; R. Hummel, 4-5-10; F. Lake, 2-7; V. McClean, 5-9-7, 5-7; M. McFadden, 4-5; B. Merkel, 5-7-9; M. E. Sutter, 3-10; E. Waller, 3-10; M. Walz, 5-10; 3-10, 2-7; G. Wheeler, 5-7; B. Worden, 5-7.		

## FOUR MILE LAKE

Mrs. George Parker and son, Everett, were Sunday dinner guests of Mr. and Mrs. Earle Pettibone. Mr. and Mrs. Philip Bareis of Clinton, Mr. and Mrs. Oscar Bareis, Jr., and family, of Chelsea, and Richard Bareis of Dexter, were Sunday dinner guests of their parents, Mr. and Mrs. Oscar Bareis.

Mr. and Mrs. William Weirich were Sunday visitors of her mother, Mrs. Mary Reimes of Gregory.

Mr. and Mrs. Donald Wright of Ypsilanti were Sunday dinner guests of his parents, Mr. and Mrs. Burton Wright and family.

Afternoon visitors were Mrs. Alan Elsas and son, of Dexter, and Mr. and Mrs. Robin Wright of Chelsea.

Mr. and Mrs. Alvin Brasso, and family were Saturday evening visitors of Mr. and Mrs. Rex Guljan of Dexter.

Mrs. John Fischel returned from St. Joseph Mercy Hospital, Ann Arbor, on Sunday. She is much improved in health.

Mr. and Mrs. Earl Odom of Ypsilanti were week-end guests of Mr. and Mrs. Richard Abdon and son.

Mr. and Mrs. Clifford Heydlauff entertained at a birthday dinner Sunday, honoring their granddaughters, Sharon Heydlauff, Guests present were Sharon's parents, Mr. and Mrs. Jerald Heydlauff and family, members of the Clifford Heydlauff family and Mr. and Mrs. Conrad Wright of Dexter.

Mrs. Leonard Loveland was a Sunday dinner guest at the home of Mr. and Mrs. Leroy Loveland in Grass Lake. In the evening all attended the Festival of Thanksgiving at the Grass Lake Methodist church. Tommy, Mary and Barbara Loveland took part in the program.

Mrs. Nelson Peterson was a Wednesday dinner guest of Mr. and Mrs. Walter Riemschneider. Nelson Peterson returned home Monday afternoon from a northern hunting trip.

Mrs. Douglas Kennedy and family were Sunday dinner guests of her mother, Mrs. Nina Wahl. Mr. and Mrs. Loren Hinderer were Sunday afternoon visitors and Mr. and Mrs. Clare Wahl and family were Saturday evening callers.

Mrs. Leonard Loveland entertained at a birthday dinner Saturday evening honoring her daughter, Mrs. Dillman Wahl. Guests present were Mr. and Mrs. Glenn Rentschler, Mr. and Mrs. Dillman Wahl and Mrs. Jerry Herrick. Mrs. Herrick was a week-end guest of her parents while her husband was north hunting.

## WATERLOO

Mr. and Mrs. Gottlieb Rothman spent Sunday with the latter's sister and husband, Mr. and Mrs. Glenn Crandall of Vandewater Lake.

Mr. and Mrs. Wilbur Puck have returned from an extensive business trip.

Mr. and Mrs. John Dykema and Mr. and Mrs. Vern Gardfield of Jackson were Sunday visitors at the Leigh Beeman home. Mrs. Wilbur Beeman and Gordon and friend were Sunday dinner guests.

Mr. and Mrs. Lowellyn Lehman of Lansing were Sunday callers at the Wilbur Beeman home.

Wilbur Beeman and brother, Donald, returned home on Sunday, each having a deer, six point and four point, respectively.

Sunday dinner guests at the Will Barber home were Mr. and Mrs. Grant Joslyn of Webberville.

Mr. and Mrs. Walter Bohme of Francisco spent Sunday at the home of Mr. and Mrs. Weldon Bohme.

Mr. and Mrs. Glenn Rentschler attended a birthday supper on Saturday evening, honoring her sister, Mrs. Dillman Wahl, at the home of their mother, Mrs. Leonard Loveland.

## WINTERIZE YOUR CAR

Prestone - Zerex Mobil Anti-Freeze Thermostat

FOOR'S MOBIL SERVICE

From where I sit... by Joe Marsh

The Milky Way Tragedy

Chub Jackson, the town's only milkman, tells us he missed on an important delivery the other day.

Up way before dawn, Chub went bustling about his daily rounds. Three quarts of milk for Mrs. Anderson, a gallon of milk for the Fishers, and so on.

Finished with his deliveries, Chub pulled the empty truck up to his front door. "What would you like for breakfast?" called his missus. "A big bowl of cereal with cream," answered Chub. "Sorry, dear," said Mrs. Jackson, "the milkman passed us by today."

Copyright, 1960, United States Brewers Foundation

## W. Eisemann Retires from Ann Arbor Utilities Dept.

Waldo M. Eisemann, formerly of Chelsea, retired as of Nov. 15, after being employed with the City of Ann Arbor Utilities Department for 35 years.

He and his wife, the former Norma Messner of Chelsea, have made their home for many years at 245 Crest Ave., Ann Arbor. Mrs. Eisemann's mother, Mrs. Charles Messner who lived in Chelsea until two years ago, now makes her home with them.

Announcement of Eisemann's retirement was made by Wayne H. Abbott, Jr., the Utilities Department superintendent.

Eisemann was a member of the meter division where he directed installation of water meters in Ann Arbor and supervised their repair and testing.

Abbott lauded Eisemann for his intense interest in his work and willingness to serve the public. When he joined the department June 1, 1925, the city was about 20,000 in population with 5,000 water meters in service. Today the population has grown to 67,000 with more than 15,000 meters.

Eisemann was a member of the firm with many of the city's plumbing and water supply problems. His suggestions became the basis for much of the expansion of the water distribution system and for many of the regulations the department now considers "standard" for the installation of water service and meters, according to Superintendent Abbott.

Eis



# Community Calendar

Chelsea Rebekah Lodge regular meeting and election of officers Dec. 6, 8 p.m. at IOOF hall. Social party Nov. 29, 8 p.m. at the hall. Husbands' friends invited. Committee: Lulu Sweeney, Anna McDonald.

St. Barnabas Church, Women's annual Christmas bazaar Saturday, Dec. 3, 10 a.m. until 6 p.m., at the church. Lively exciting new items on sale at moderate prices. Come and bring your friends. Have tea and cookies and look for wonderful bargains at the "white elephant" table.

Beacon Light Extension club, Wednesday, Nov. 30, 8 p.m. at the home of Mrs. Robert Bruestle. Program chairman: Mrs. James Kress and Mrs. Kenneth Matthews.

Willing Workers Circle of St. Paul's Women's Guild Wednesday, Nov. 30, 8 p.m., at the church hall.

VFW Auxiliary 4976 regular business meeting Monday, Nov. 28, 8 p.m., at K. of C. hall. Members to bring bazaar articles.

South Sylvan Extension club Christmas party Thursday, Dec. 1, at the home of Mrs. Raymond Liebeck. Pot-luck luncheon 12 o'clock. Each member to bring gift for "mystery sister"; also "white elephant" item.

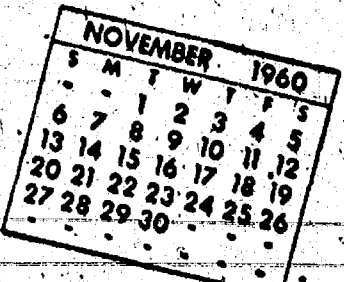
VFW annual bazaar Saturday, Dec. 3 at Meadon's Appliances Store, N. Main St. Christmas gifts for all the family. Articles for the bazaar may be left at 135 Devey St. adv.22

Special convocation Olive Chapter No. 140-RAH, Saturday, Dec. 3, Royal Arch degree.

Lincolns Christmas party Thursday, Dec. 1, at Lima Community Hall. Pot-luck dinner, 12:30 p.m. Hostess: Hilda Pierce.

Rummage and bake sale at Waterloo schoolhouse, Saturday, Dec. 3, 1-5 p.m. Sponsored by Ladies' Aid of Waterloo EUB church.

Chelsea Girl Scout Neighborhood meeting Monday, Nov. 28, 8 p.m.



Junior High school home economics room, Kay Kimball, director, Huron Valley Girl Scout Council, will be present.

McKune Memorial Library will be closed 7-9 p.m. Thanksgiving Eve, Nov. 28.

Merry Maids 4-H club Wednesday, Nov. 30, 4 p.m., at the Junior High school.

Special Convocation, RAM, Royal Arch degree, postponed until Dec. 3.

## 4-H Members Win Chicago Award Trip

A group of Washtenaw county 4-H club members and leaders will leave Ann Arbor on Friday morning, Nov. 25 for a three-day award trip to Chicago, Ill. The trip is sponsored by the Ann Arbor-Kalamazoo club. The delegates chosen are 15 years old or over and are outstanding in over-all 4-H achievement.

Club members from the Chelsea area who received the award trip are Carol Reddeman and Velma Wiseman.

Others are Barbara Marshall and Frank Ticknor of Ann Arbor; Doris Herter, Bill Rogers and Terry Wild, Saline; and Bill Knapp of Ypsilanti. The 4-H leaders who will be chaperoning the trip are Mrs. Bernard Kemmer of Manchester, Mr. and Mrs. Duane Rogers of Saline, and County 4-H Agent Jim Hutchinson.

The delegates will join groups of 4-H members from Jackson, Lenawee and Calhoun counties and will share many of the same experiences while in Chicago.

The group plans to visit the International Livestock Exposition and will see the Horse Show and Rodeo there. The delegation will attend a stage play and will tour many of Chicago's tourist attractions. Before returning to Ann Arbor on Sunday, the group will join the delegates to the International 4-H Congress for church service at the Conrad Hilton Hotel.

## ASC Commodity Loan Payments Due on Tuesdays, Thursdays

The Washtenaw county Agricultural Stabilization and Conservation Committee announces that Commodity Loans made to producers in Washtenaw county will be disbursed on Tuesday and Thursday of each week. Loans for warehouse receipts received through Monday will be disbursed on Tuesday and those received on Tuesday and Wednesday will be disbursed on Thursday.

Farm Storage loans will be disbursed on Tuesday and Thursday after the grade analysis is received from the Testing Laboratory.

Mr. and Mrs. Martin Steinbach and son, Ray, returned early Sunday after spending a week at Cedarville in the Upper Peninsula. The men did some deer hunting. Ray being successful in downing an eight-point buck.

## DEATHS

### Nathaniel W. Laird Was Formerly Prominent Area Fruit Grower

Nathaniel W. Laird, who was born in Chelsea and lived in this area most of his life, died Saturday at Winterhaven, Fla., where he had planned to spend the winter. He made his home in Ann Arbor with a son-in-law and daughter, Mr. and Mrs. Ray Butcher, 1830 Alhambra.

Mr. Laird was a fruit grower here for many years before his retirement, his farm being located at the northeast corner of Pierce and Cavanaugh Lake Rds. He won many premiums at fairs on exhibits of apples and other fruit.

He was active in the Ann Arbor Farmers Market and continued his interest in that after his retirement.

He was a member of the West Side Methodist church at Ann Arbor; a member of the Western Washtenaw Farmers club and a former active member of North Sylvan Grange and Pomona Grange. He was 87 years old.

Born Jan. 13, 1873, in Chelsea, he was a son of William H. and Ellen Guthrie Laird.

He was married at Stockbridge to Helen McCloy. She died Oct. 9, 1950.

Survivors of Mr. Laird are three daughters, Mrs. Ray Butcher of Ann Arbor, Mrs. Florence Schabel of Okemos, and Miss Lucille Laird of San Diego, Calif., two grandsons, Richard and Donald Butcher, and two great-grandchildren.

Funeral services were held at 1 p.m. Tuesday at the Muehlberg Funeral Chapel, Ann Arbor, with the Rev. Vaughn Whitfield officiating. Burial followed at Oaklawn cemetery, at Stockbridge.

### Mrs. Frank Reddeman Former Lima Township Resident Dies at Milan

Mrs. Frank Reddeman, who lived on a Lima township farm for more than 20 years prior to 1950, died Monday morning at the home of a son-in-law and daughter, Mr. and Mrs. Eugene Ulrich, 201 East Michigan Ave., Milan. She and her husband had made their home there the past 10 years.

The former Elizabeth Maede, she was born in Germany, Aug. 29, 1877, a daughter of William and Louise Maede. She came to the United States with her parents as a child and the family settled in the Detroit area.

She was married to Mr. Reddeman at Plymouth, Feb. 14, 1906 and they lived on a farm near Plymouth for 22 years before moving to this vicinity.

Survivors, in addition to her husband, are two daughters, Mrs. Ulrich of Milan, and Mrs. William Bahnmiller of 774 Dancer Rd.; one son, Clarence Reddeman, 10395 Jerusalem Rd., four grandchildren, Robert Burgett of Grass Lake, Richard Stark of Olive Ann Reddeman of Ann Arbor, and Carol and Laurie Reddeman, and one great-grandson, John Burgett of Grass Lake.

Also surviving is one sister, Mrs. Mary Reddeman of Milan.

### 500 Attend Senior Arts, Crafts Show

Approximately 500 persons attended the Senior Citizens Arts and Crafts Show held at the Ann Arbor Senior Citizens Guild last week and concluded Sunday, with recognition of Washtenaw county couples who have been married 50 years or more.

### Howard T. Pickett Unadilla Grocer Dies Sunday at His Home

Howard T. Pickett, 56, a Unadilla grocer, died Sunday morning at his home, 1985 Joslin Lake Rd., near Gregory, following an extended illness.

He was born in Muphig Feb. 28, 1904, the son of Daniel and Jennie Pickett. He operated grocery stores in Muphig for nine years and in Unadilla for 11 years. He was a member of Lodge 40, IOOF of Unadilla.

Mr. Pickett is survived by his wife, Winona, and his mother, both of Unadilla; two sons, Jack and Kent at home; a daughter, Mrs. Elaine McGee of Gregory; a brother, Mill of Tucson, Ariz.; and a grandson.

Funeral services were held at 2 p.m. Tuesday in the Caskey Funeral Home in Stockbridge, with the Rev. William Yauch of the Unadilla Presbyterian church officiating. Burial took place in Pleasant Grove cemetery, Jackson county.

## Wool Growers Must Keep Lamb Sales Records

Chairman Max M. Kalmbach of the Washtenaw County Agricultural Stabilization and Conservation Committee today reminded wool growers who marketed lambs this fall of the importance of keeping adequate records of their sales. These records are needed next spring for use in applying for payments under the wool program.

"I want to urge strongly," Kalmbach said, "that growers get these fall sales records together now and either keep them in a safe place at home or file them at the county ASC office. Applications for payments on 1960-61 marketings must be filed by the end of next April, and may be filed any time before then."

The chairman added that lamb feeders particularly should keep accurate records on the length of time they have owned a specific lot of lambs. Lamb payments are made only to producers who have owned lambs 30 days or more, and the amount of payment is based on weight gain on the lambs during the seller's ownership.

The sales record for lambs sold must include the name of the buyer, his signature, and the number of liveweight lambs sold, plus the description "unshorn." To encourage the customary practice of selling lambs with the wool on, lamb payments are made only on lambs that have never been shorn.

## Official Vote

(Continued from page one) ing attorney—Ager, (B), sheriff—Oltersdorf, 28,014, 38,340; county clerk—Blasak, 23,240, 38,340; county treasurer—Blasak, 23,240, 38,340; county auditor—Blasak, 23,240, 38,340; county surveyor—Blasak, 23,240, 38,340; county judge—Blasak, 23,240, 38,340.

In the non-partisan contest certified Washtenaw county voters are: Supreme Court—Blasak, 23,240, 38,340; Judge—Blasak, 23,240, 38,340.

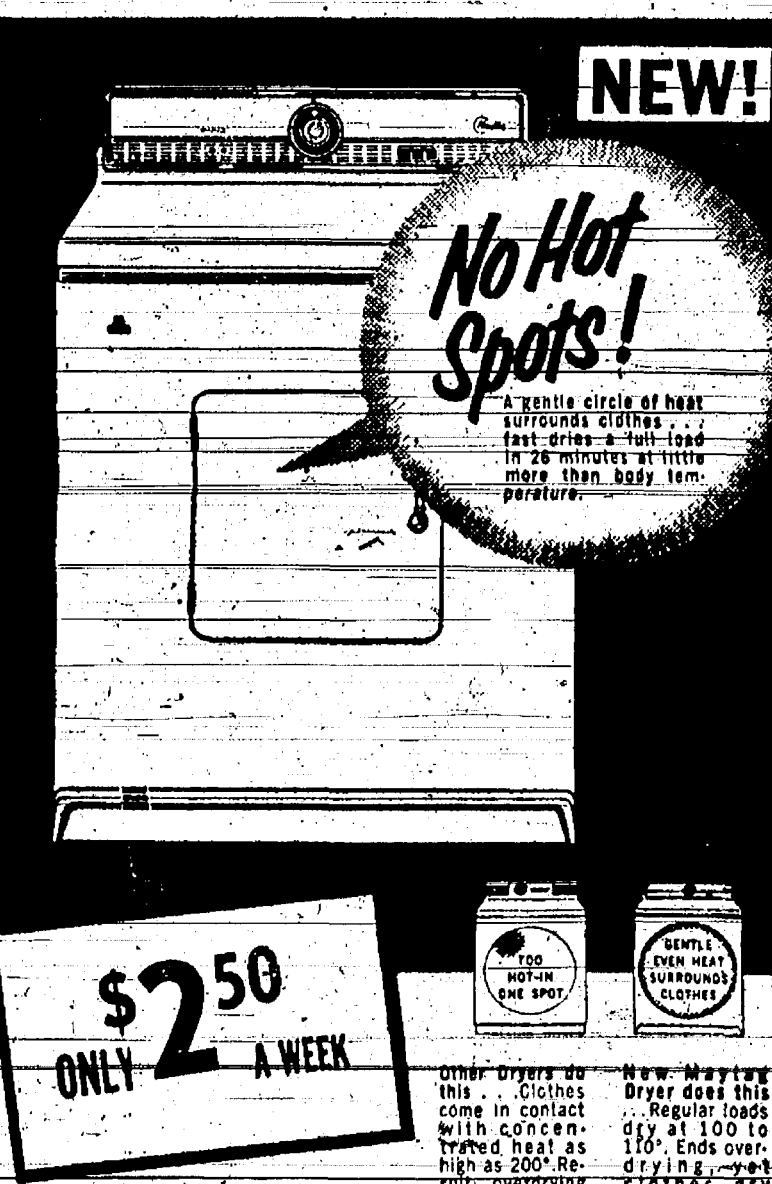
The vote on the proposed certified list is: No. 1 (school and loans)—yes, 28,014, 38,340; No. 2 (sales tax)—yes, 28,014, 38,340; No. 3 (Comp. Tax)—yes, 28,014, 38,340.

Debate reported to be in progress in the Pentagon on reducing strength of U.S. troop commitments overseas. Those favoring a reduction in our overseas garrisons would help check the forward flow of dollars to foreign capitals.

The same issue was debated last year, the decision then being to maintain the strength of U.S. units abroad. Place where would probably be cut first, many.

# MAYTAG "HALO OF HEAT" DRYERS

Fast Dry a Load in 26 Minutes



4 NEW FEATURES...3 NEW COLORS...4 NEW MODELS

NEW! DRY YOUR CLOTHES IN FILTER-CLEANED AIR Exclusive Air Intake Filter removes dust and dirt from all incoming air. Keeps clothes clean!

NEW! PUSH THIS BUTTON FOR AUTOMATIC DE-WRINKLING Exclusive "Wash 'n' Wear" setting removes wrinkles, saves you ironing.

NEW! AUTOMATIC SPRINKLER—Dampens clothes quickly, evenly for easier ironing.

NEW! REVOLVING DISC LINT-FILTER—Pulls lint directly out of dryer. Snaps out for easy cleaning.

PLUS: NEW MATCHING COLORS—Pink, green, yellow, and white to match your Maytag Automatic Washer. • Automatic Timer Control • Special Air-Fluff Setting • Safety Door • Quiet Operation, Cool Cabinet • Rustproof Cabinet • Gas or Electric Models

NEW MAYTAG "HALO OF HEAT" DRYERS AS LOW AS 169<sup>95</sup>

Shop and Save at Frigid Products L. R. HEYDLAUFF 119 N. MAIN ST. PHONE GR 9-6651

## Add living space anyplace with FILON guaranteed fiberglass panels



You can add beauty inside or outside your home with easy to handle Filon and ordinary tools...build shoji screens and doors, room dividers, carports, patios, awnings, fences. Super-smooth Filon lasts longer. Greater strength...only Filon is reinforced by Nylon and new Super-Fil Fiberglass. FREE FILON BOOKLET shows 20 exciting decorator colors; flat, also various corrugations or shiplap, easy installation.

47¢ PER SQ. FT. FREE BOOKLET "How to build with FILON" Stop in at your neighborhood dealer, or call or write today to...

FILON Regional Distributor. DIAL GR 5-3391 CHELSEA LUMBER CO.

### Gambles The Friendly Store

FOR TOP ENTERTAINMENT ALL YEAR Give CORONADO

**CORONADO CLOCK-RADIO**  
Music's your alarm with this push-button clock. You just flip a button to turn radio "on", turn alarm "off", delay alarm or preset automatic radio. Handsomely styled in charcoal or turquoise with white. A fine gift!  
**33<sup>88</sup>**  
Compare at \$9.95

**CORONADO Tempo**  
The look is new—the tone is true. A beautiful, stylish, modern radio. Has easy, precision controls. Space saving cabinet only 10 1/2" W.  
**19<sup>95</sup>**  
15 DOWN

**CORONADO 3-CHANNEL Stereo Hi-Fi Phone**  
Full-fledged stereo console that fills you with room-wide sound in depth—at a portable model price. Plays all records. Has 3 sound systems, dual controls. Cabinet 26" W.  
**99<sup>95</sup>**  
15 DOWN  
Lined Oak .....\$109.95

**Famous 21" CORONADO Decoder Series TV**  
There's no finer Christmas gift for the family than this small Coronado TV console! You'll marvel at its fine styling, top-notch performance in difficult reception areas. Aluminized picture tube and ultra safety glass for sharp, glare-free pictures. Dual hi-fi speakers for life-like sound. Powerful chassis, hand wired circuits. Total...  
**229<sup>95</sup>**  
\$10 DOWN—275 Per Week  
Compare at 269.95

**19" Voyager CORONADO Portable**  
NEW LARGER SQUARED SCREEN  
MOCHATONE VINYL CABINET  
BUILT-IN TELESCOPE ANTENNA  
ONLY \$5 DOWN 2.40 Per Week  
189<sup>95</sup>  
With ball-bearing casters, oil brass finish...  
19.95

### VISIT GAMBLES TOYLAND WHERE LATEST SELECTIONS ARE COMPLETE (As Little as 50¢ Holds on Lay-Away!)

**Cuddle Bear**  
198  
Favorite beige and brown plush bear is 14" long. Sewed-in eyes, pom-pom nose.

**Princess Poodle**  
298  
You teach her to sit up, beg, walk-by remote control. Has cool and bare, too.

**Softie Doll**  
498  
Soft, baby-like vinyl skin and sleeping eyes. Coos, drinks, wets. Taffeta dress, 18" H.

**Bride Doll**  
\$4.99  
Girl's favorite! 20" bride in gown, hair, heels, warrings! Curly hair, jointed.

**Electronic Jet**  
1495  
Shoot rockets, fly by radar! Sturdy plastic construction. Battery operated.

**Luggage Set**  
298  
Sturdy vinyl, 4-pc. set for "Dolly and Me" travel. Luggage of "Polka Dot" design.

**Farm Tractor**  
189  
Sturdy steel tractor has realistic engine details! Steering wheel turns wheels.

**Ford "Falcon"**  
88¢  
Authentically detailed metal model runs on friction motor. Sure to please! 8 1/2".  
\*Prices and offers apply to all Gambles-owned stores. Gambles Authorized Dealers set their own prices and terms.

**Police Car**  
298  
Turret revolves, gun chatters, lights up! Detachable driver. Sturdy metal. 9 1/2" L.

**Hot Rod Kit**  
298  
Snap-together model. Has electric motor, headlights—steers! Battery not included.

**Smoker Rifle**  
298  
Lever action repeating. Daisy rifle fires real smoke with a loud noise. 31" sling.

**Winchester Gun**  
298  
Cap and "bullet" fire at same time. Ejector! 6" cartridge. 20" long "bullet". 20" long.



## Mortgage Is Retired on Church Unit

During the Sunday morning worship service Sunday, Nov. 20, at the Congregational church, a mortgage burning ceremony took place in observance of liquidation of the final indebtedness on the \$40,000 educational unit built four years ago.

Loyalty Sunday was also observed in recognition of support pledged for the 1961 program of the church.

The mortgage burning ceremony began with presentation of the paid-up document by George P. Singer, representing the church trustees, to Mrs. Edward Viesel, church school superintendent. She placed it in a specially prepared tray and the two acolytes, Ronald Morley and Eric Rusten, set it ablaze with their candles.

The tray used was part of a pewter communion service which was one of the original sets used at the church in the 1800's. The tray was lined with insulation to prevent damage from the burning paper.

A dedicatory prayer by the pastor, the Rev. Philip Rusten, concluded the ceremony.

## Karl Riemenschneider Is Guest Speaker for

### Homer Rotary Club

Karl L. Riemenschneider, son of Mr. and Mrs. Lawrence Riemenschneider, 175 Park St., was the guest speaker at a Rotary club dinner meeting at Homer Wednesday evening, Nov. 16.

A member of the Speech Honors course at Albion College, his topic was "The Economic Challenge of Soviet Russia."

Riemenschneider's speech instructor at Albion College, Dr. Richard Smith, later received a letter from the club commending Riemenschneider for the address he gave.

A graduate of Chelsea High school, Riemenschneider is now a junior at Albion College.

The mental level of the human race is suspect every year about this time when the latest fashions from Paris arrive.

## The Way the Ball Bounces

With Tom Johnston

Football season is over. We helped ring down the collegiate year at Columbus, O., Saturday with the Michigan-Ohio State football game. This week will see some of the great traditional games as the last of the season on the national football front.

Michigan outplayed the Buckeyes Saturday, but just couldn't come up with the big play that would have pushed the score over. Bump and his staff certainly have given Michigan fans something to look forward to during the year ahead, however.

The Wolverines closed the season with a 1 and 4 record, and next fall should have one of the nation's best teams. Michigan was an imaginative team which showed plenty of desire throughout the year, and was always well coached.

The Wolverine freshman team this fall was one of the best in years, and with some of the sophomore linemen coming through next fall, the Wolves will be tough.

Michigan, by the way, will have one of the nation's toughest schedules in '61 as they face UCLA, Army, Iowa, Minnesota, Ohio State, Michigan State and Purdue in a schedule that will have seven games at home.

The basketball season is here, and in just a week, we'll be right back on the sports beat broadcasting the game of the week for the third year in a row. You know, no matter where I travel to see a sports contest, whether it be collegiate or pro, I still get the biggest kick from watching a good high school team perform. The desire displayed by everyone involved always makes for more excitement and more thrills than you'll generally find in any other facet of sports.

Knowing the boys who play of course adds a certain emotional appeal that is lacking in other events, and there is certainly nothing that's more fun than to watch a football or basketball game between two rival communities such as Chelsea and Dexter, for example.

By the way, how many of you really appreciate the job which the high school coach does?

Like any man, he has his problems, ambitions, his hopes, and often I've sat with men connected with the high school sports front who once had hopes of attaining the college ranks, but who through good, are never just good enough. Most realize some time just what an important job they have in building the men of the future, by the way they lead, not only on the day of the game, but every day.

Being a leader is a tough job, being a good leader is even tougher. Kids too often have the attitude "Mr. Jones does it, it must be o.k." So when you take a look at your coach, or have a tendency to gripe about the guy, stop and ask yourself "could I do the job any better?" and if the answer is yes, go back to school and obtain a physical ed degree, then you too can miss meals, travel long hours to small towns in bad weather, live and die with each team and individual effort to win, counsel problems, argue with officials, worry about attendance, plan budgets and the hundred and one other jobs which your coach has to do.

Bob Scheffing, a former pilot of the Chicago Cubs, will be the next manager of baseball's Detroit Tigers.

Scheffing was signed to a two-year contract Monday to succeed Joe Gordon who quit to go to Kansas City.

Scheffing's signing ended a seven-week search in which the Tigers considered a long list of candidates including former New York Manager Casey Stengel. Stengel was a top candidate but the Tigers looked elsewhere when Stengel declined an immediate decision.

Scheffing guided the Cubs to fifth place finishes in 1958 and 1959 after finishing seventh in his first season as a big league manager. He was replaced at the end of the 1960 season, and last season

## Fire Chief Suggests Checking Stored Grain For Possible Heating

In view of disastrous fires of undetermined origin which have struck farm buildings in this area in recent weeks, Fire Chief Ted Balmer suggests that farmers take extraordinary precautions in locating and eliminating any possible danger areas or conditions which might be unrecognized as pre-fire hazards.

In attempting to learn the cause of various fires, Balmer says, the thought has occurred to firemen that there is a possibility of spontaneous combustion in stored grain stocks. He suggests that a close

watch be kept on any stored grain and that the grain be shifted occasionally from one spot to another by means of shoveling, etc. Balmer believes this is one way to prevent any overheating which might lead to spontaneous combustion.

Balmer said most farmers are extremely conscious of fire danger around farm buildings and welcome any suggestions leading to additional fire prevention.

## INVESTIGATING MAILING

A Senate group, and the Justice Department have been looking into a sizable mailing of campaign literature, which has been objected to because a sermon distributed was not identified as to its source. The law requires that campaign literature be so identified.

MYSTERY FARM NO. 125 proved to be the New York Central railroad tracks west of Adolph Duerr property on Cavanaugh Lake Rd., Chelsea, the farm is bounded on the south and west by Cavanaugh Lake Rd. and on the east by Cavanaugh Lake Rd. years to the west after following Conway Rd.

## Adolph Duerr, Sr., Owns Last Week's Mystery Farm

Adolph Duerr, Sr., is the owner of the farm pictured in the November issue of "Mystery Farm No. 125." He has owned the 98-acre farm located at the corner of Cavanaugh Lake Rd. and Conway Rd., since he and his late wife, Louise, purchased it April 5, 1938.

At that time there were no buildings on the place, the original house located on the site occupied the present house, having been built down many years before. Duerr built a barn in 1940; added a house in 1942; and, in 1945, built the slaughter house where he and his son, Adolph Jr., conducted custom slaughtering business until about two years ago.

Duerr was employed for a number of years in the former Loeffler market which was located at the southeast corner of South Main and Park St. Later, he operated a meat market for several years at 115 South Main St.

Duerr is now employed in the department at the Stop & Shop supermarket.

In addition to his son, Adolph,

Jr., Duerr's family includes his daughter-in-law, Lina, and two granddaughters, Barbara and Christina. They live at the family home, 204 East St.

Mrs. Duerr, Sr., died in March, 1950.

Roy Broesamle works the land on the Duerr farm and the house is occupied by Mr. and Mrs. Lawrence Riser.

Eight years ago, on Labor Day, 1952, Duerr lost 13 head of cattle when they were struck by lightning during a storm which struck the area at 8:30 p.m. He discovered them dead under a tree on a rise of ground the next day. They had evidently taken shelter under the tree when the storm came up.

It was learned later that the late Conrad Harner whose farm is just east of the Duerr farm had lost 92 sheep when they were struck by lightning on the same spot 40 years earlier. Members of the Harner family had an old photo showing their father preparing to bury the sheep.

Duerr bought the 98-acre farm from Harry Conway, administrator of the estate of his mother, Mrs. Margaret Conway. The farm had been known as the old Conway place for many years and Conway Rd., bordering the farm, was named for the family.

The Conway family included another son, Garrett, and a daughter, The Conways later operated a pharmacy in Jackson.

The farm as it now stands includes parts of parcels of land secured by three different original owners.

Moses Thorn secured one part of the farm in April, 1937, when Mrs. V. M. Thorn was president of another portion was originally owned by the U. S. Government.

Abigail Waisley (no date available), a third part was secured from the Government in 1837 by Charles Higgins; and an additional part was secured by the U. S. Government to Higgins in 1840.

Hugh McNally was the owner

(Continued on page 12)

## 1961 CHRISTMAS CLUB NOW OPEN

Your Christmas Club Check is on its way to you!

If you were one of the foresighted Santas who joined our 1960 Christmas Club, you have probably now received your gifting check... enough to buy extra-special presents for everyone on your list! If you are not a member of this happy group, resolve to be one next year. Join our 1961 Christmas Club now... you'll be so glad you did!

NOW... is the time to...

Join our Christmas Club

# CHELSEA STATE BANK



Bottled Gas Service

We Have a Large Stock of

- ★ SPACE HEATERS
- ★ FLOOR FURNACES
- ★ IN-THE-WALL HEATERS
- ★ WATER HEATERS
- ★ RANGES
- ★ DRYERS
- ★ INCINERATORS

We install and service all types of gas equipment.

PHONE NO 5-6161

Gallup-Silkworth Co., Inc.

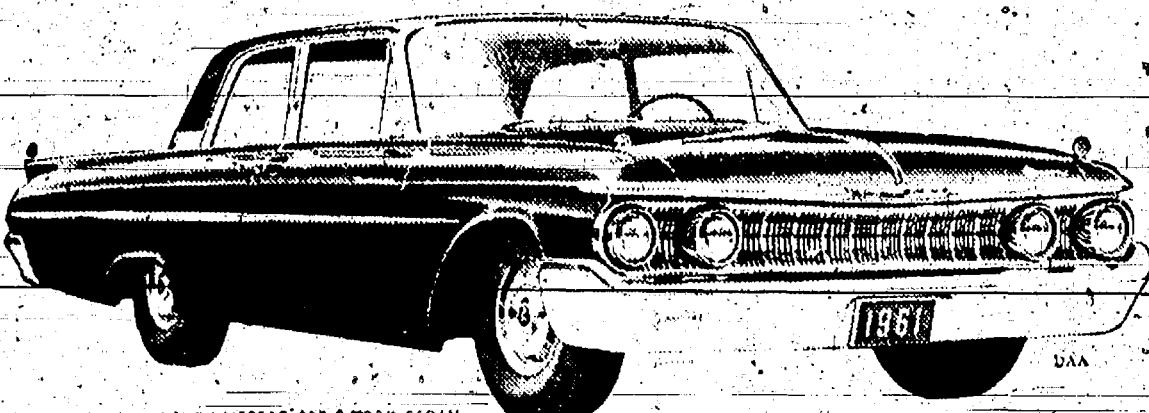
2141 So. State St. Ann Arbor

MAUSOLEUMS ★ MONUMENTS

BRONZE TABLETS ★ MARKERS

## BECKER MEMORIALS

6033 Jackson Road  
ANN ARBOR, MICHIGAN



# BEST BUY!

\$54<sup>11</sup> A MONTH BUYS THIS VALUE-PACKED

# MERCURY METEOR!

★ SEE IT! DRIVE IT! SAVE TODAY AT ★

## CHELSEA IMPLEMENT COMPANY, INC.

3231 Manchester Road

Chelsea, Michigan

\*With down payment plus state and local taxes where applicable.



Established 1871 **The Chelsea Standard** Telephone GR 5-3551  
General Excellence Award by Mich. Press Ass'n., 1951-1953-1956-1959  
Walter P. Leonard—Editor and Publisher

Published every Thursday morning at 300 North Main Street, Chelsea, Mich., and entered as second class matter at the postoffice at Chelsea, Mich., under the act of March 3, 1879.

Subscription Rates (Payable in Advance):  
In Michigan: One Year \$3.00 Six Months \$1.75 Single Copies \$ .10  
Outside Michigan: One Year \$4.00 Six Months \$2.25 Single Copies \$ .10  
Service men or women, anywhere, 1 year \$3.00  
RETURN POSTAGE GUARANTEED

## Thanksgiving Is Time To Rededicate Ourselves to Spiritual Principles

Thanksgiving Day, which falls on the last Thursday of November, comes this year, on the 24th. Thus, the interval between this November religious observance and Christmas is a full month this year.

Our National Thanksgiving—which the day was first called by Sarah J. Hale, who is credited with having begun the national observance of Thanksgiving Day in the United States in 1863—is certainly a day of richness, reward and satisfaction in the United States in 1960.

Americans should never lose sight of the fact that they are more blessed than any other people on earth, materially. We should give thanks, and try to make ourselves worthy of these blessings, spiritually.

We in America have come a long way since that New England day, in the autumn of 1621, when Governor Bradford ordered some of the colonists into the forests to shoot a number of wild turkeys. That night, Indians, who had brought deer, and colonists who had shot turkeys, feasted together. It was probably the first Thanksgiving Day in the United States.

Every American should give thanks in his prayers for the American heritage, our freedoms, including religious freedom, and all that goes to make up the riches and wealth of this nation. Unless we spiritually deserve these blessings, they will be of little value to us; and we hope that Thanksgiving Day, 1960, will be a day of rededication to spiritual principles for many Americans.

## Automotive Business Undergoes Revolution Because of Compacts

A big change has come so suddenly in our vital automobile industry that it is hard to realize all of its implications. This is the triumph of the compact.

While part of this is still to come, automotive experts find it mostly good so far. Fears that they would cut the consumption of gasoline enough to reduce tax revenues have proved groundless. The higher mileage per gallon may be offset by more driving, more cars on the highway. In the first three months of 1960, gas consumption increased 227 million gallons over the same period in 1959.

A year ago, one out of nine cars bought here was foreign-made. Now the proportion is one in 13. Last June, shipments of foreign cars to the United States were only 33,000—against 60,000 the previous June. Two makes increased sales but some others have been so badly hit that the experts say they are "on the point of disappearing from our market."

In the summer of 1959, there were only two American-made compacts, Rambler and Lark, sold by 5,000 dealers; now there are ten, sold by 31,000 dealers. Who buys the compacts? All groups, apparently—single and married, large families and small, people in every income bracket. One psychological effect has been to bring car buyers to talk openly of economy.

Last year 10 per cent of the new cars bought in America were compacts. This year the figure jumped to 25 per cent. Next year even the most conservative automobile executives expect it to rise to 33 per cent and some predict it will be more, nearly 50 per cent.

"The whole profile of the automobile industry," the experts say, "has been profoundly changed." Every highway is likely soon to confirm this statement.

"From birth to 18 a girl needs good parents. From 18 to 35 she needs good looks. From 35 to 55, a woman needs personality. And from 55 on, the old lady needs cash."—Kathleen Norris, novelist.



## Our Thanksgiving Wish...

May we have peace, but with honor and with liberty; may we never seek war; yet, may we never surrender the American way of life; may we never give up the right as Americans to think, talk, and worship, each according to his own way; yet may we be always united, a nation indivisible, in the common defense; may we enjoy the richness of our land, yet be willing to endure the hardships of free men determined to keep a democratic country.

WE WILL BE CLOSED THANKSGIVING DAY

**Alber Motor Sales, Inc.**

GULF PRODUCTS - PLYMOUTH - VALIANT  
295 SOUTH MAIN STREET CHELSEA, MICH.

# THANKSGIVING



Every day we can well give thanks for the many blessings we enjoy... yet, we set aside one special day for united prayer, good fellowship and feasting, that we may celebrate the bounty of God, together. This Thanksgiving Day, gather with your friends... in church... around the table!

## ★ MICHIGAN MIRROR ★

By Elmer E. White, Secretary, Michigan Press Association

Michigan businessmen have again been asked to help the state save money by taking a hand in the complex business of registering automobiles.

Secretary of State James M. Hare sent letters to many employers or personnel directors asking them to help their workers do the paper work required to obtain the black-on-aluminum tabs which will be fastened to licenses issued in 1961.

This is the second year for the tabs, and the state plans to issue full-sized plates again in 1962. Hare sent letters to many employers or personnel directors asking them to help their workers do the paper work required to obtain the black-on-aluminum tabs which will be fastened to licenses issued in 1961.

Now, the applicant must fill out his own registration form and present it to a Secretary of State Branch Office along with the weight tax in order to get a license. That's where the businessmen and personnel directors come in. Hare encourages employers to make arrangements for their people to pick up the application forms at the branch office, get them to the workers, perhaps fill them out for the registrants and return them to the branch office where the tabs are issued.

He says it is a good device for labor-management relations, and saves the employer money, too.

If many people are left to their own devices for registering a car, they will wait until the deadline is uncomfortably close before going in with the forms and the money, so absenteeism is reduced. But if registration is made easy at the place of work, the workers appreciate the service and are not off standing in long lines for licenses during working hours.

Hare told the employers he asked for help that the machine-prepared application form—mailings which were discontinued probably really did work a hardship on the applicants.

"However, I'm sure most of you will agree that the annual savings of around a quarter of a million dollars in the case of the prepared application service is one which must be made at a time when tax revenues are greatly needed to keep schools running, to build highways and to provide other needed services."

From a practical standpoint, the idea isn't bad. I reckon we could change a heap of dates and make it a easier world. For instance, we could change Income Tax Day from April 15 to February 20 and save three years of misery. But as a matter of principle, I'm again monkeying with tradition. I hope the Congress just leaves Thanksgiving where we got it.

Well, Mister Editor, I'm mighty thankful this Thanksgiving for a heap of things. First off, I'm thankful I ain't no hard-to-please as Ed Doolittle. He said he didn't vote for either Nixon or Kennedy, said he didn't like the farm program of either one of them. Ed allows as how he's waiting for a candidate to come along that'll offer control of the weather.

Coming right after a national election, I'm special thankful that we not only got free speech in this country but that we ain't got no law making us listen to some of it.

I'm thankful, not only for all

governmental services, Hare said in his letter.

A relieved happiness surrounds that tiny Upper Peninsula town of L'Anse. Residents are enjoying the reopening of a major industry in their midst, the first since six years ago when Ford Motor closed its plant which processed wood for station wagon bodies. When metal replaced wood for this purpose, the plant was closed.

Swinging into full production now is another modern plant operated by Celotex. At full capacity it will give employment to 100 people within its grounds and up to 400 woodsmen, required to supply the hardwood logs which are turned into a half million square feet of fiberboard each day.

L'Anse people appreciate, but few others seem to know about the consideration shown the community by the Ford Motor Co. in its effort to sell the 185,000 acre tract of land.

When it became necessary for Ford to cease operations, Clarence Dubuque, chairman of the local economic development group and president of the L'Anse Commercial Savings Bank, contacted the auto company with an urgent appeal that they sell only to an organization which would agree to maintain production activities in the L'Anse area. He feared the community would become a ghost town if a new owner simply shipped off logs for processing elsewhere.

Ford agreed to this, and held the land until such a buyer appeared. In the meantime, Ford refused at least one firm offer from a purchaser who did not qualify according to the agreement.

Deer may be somewhat safer from hunters' guns on land belonging to private hunting clubs, but they may be in much greater danger of starvation, according to a Michigan State University wildlife researcher.

L. W. Gysel said under-hunting on the roughly 1.7 million acres of private deer hunting land in Michigan complicates an already dangerous problem of over-population. He said the animals were eating food once considered inedible, and wild tree fruits such as acorns, on the club country in Alcona and

neighboring counties where clubs have about a quarter million acres. Here, some of the herds exceed range capacity and have over-browsed until starvation, small deer and small racks of horns are the result.

The researcher wanted to find out how deer can survive on the fairly open country and if anything should be done to protect the cover for rabbits, grouse, and other smaller species.

Apparently, making food available to deer can only solve part of the problem even where it is practical, Gysel said.

## THE LETTERBOX

Nov. 20, 1960

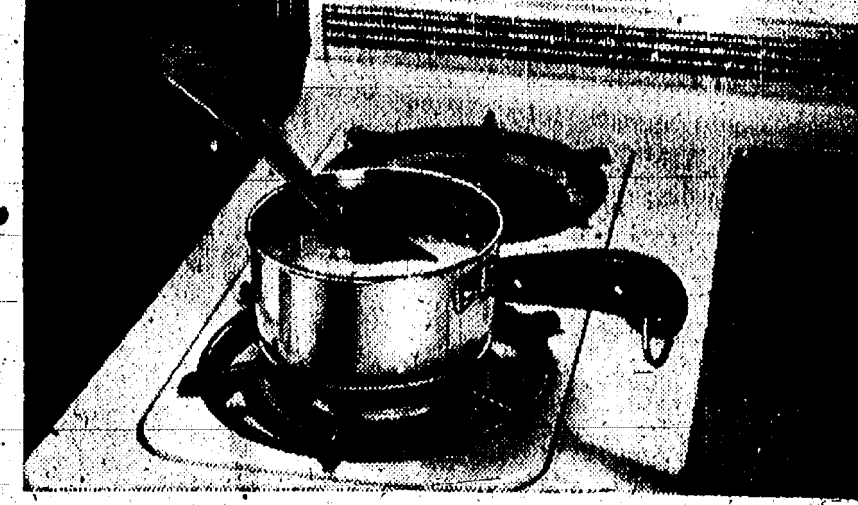
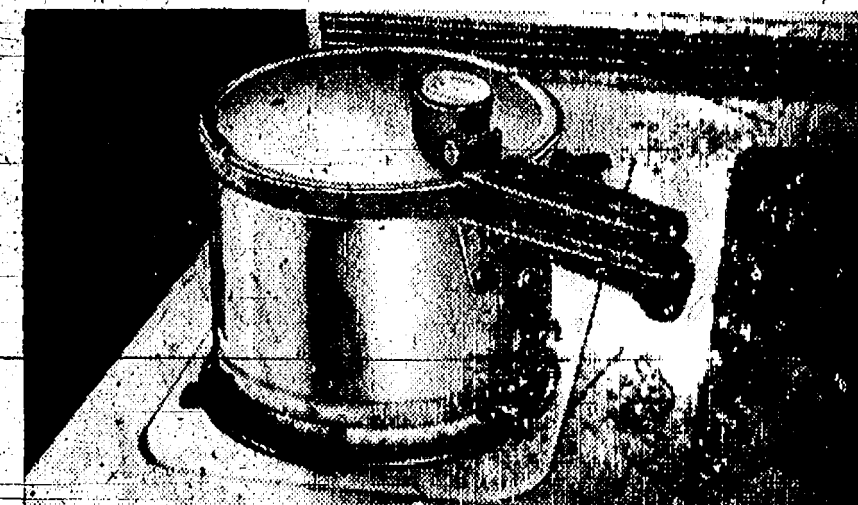
Dear Editor: Congratulations to Chelsea High school on their production of "The Diary of Anne Frank." It was the finest high school play I have ever seen.

The director and cast did a superb job of combining humor with serious drama. Such a work of art should not slide into oblivion. Surely the surrounding communities would welcome an opportunity to see and enjoy this fine portrayal of a significant story.

Also, I do hope, the play was filmed and taped for future students of literature and drama to enjoy.

Works of art deserve to be preserved and Chelsea High Schools rendition of "The Diary of Anne Frank" should not be lost.

Sincerely,  
Arlene Pelt.



High-heat, low-heat, hundreds in between. With gas, you're the boss. No more 3, 5 or 7 factory-set burner speeds. Get high heat a pressure cooker demands—without waiting. Switch to low simmer heat a delicate cream sauce demands without a moment's lag—there's no waiting for the burners to cool down. Whatever the job—gas gives you the exact heat needed—instantly. And, no other fuel gives such response for so little. Get a wonderful Gold Star range and you get HUNDREDS OF HEAT SETTING

SEE THEM AT YOUR DEALER OR GAS COMPANY SHOWROOM  
So much more for so much less—  
**GAS naturally**  
MICHIGAN CONSOLIDATED GAS COMPANY

By FRANK C. MORRIS

## Michigan GOP Searching For Miracle Man

If the Republican Party is to change from its underdog status in Michigan during the 1960's, a new leader must emerge with a clear program and the ability to sell it.

That statement is about as pungent as saying a husband cannot win a domestic argument without money.

But where in this puzzling era of split-bailot voting can the GOP find a talented patriot with ability to act on TV?

Because of his comparatively good race for the governorship this year, Paul Bagwell could become the figurehead of the party if it were not for two decisions, one by himself and the other by the voters.

The personal decision by Bagwell was that he will not again run for office and will return to the faculty of Michigan State University.

The decision by the people was the re-election of conservative state legislators who believe the party must have positive direction back to old-fashioned thrift and common-sense service to everyone.

The election in Michigan widened the gulf between Republican conservatives and liberals in the same way the national voting created two distinct factions, one to be led in the future by Arizona's Senator Barry Goldwater and the other aligned to New York's Governor Rockefeller.

Michigan's GOP legislators did not defeat Bagwell, as one Detroit newspaper charged. They worked as sincerely for a Republican sweep in Lansing as they worked for their own election.

The conservative lawmakers won, re-gaining control of the House of Representatives by the margin of one seat.

The state ticket lost for the seventh consecutive time. At the two ends of the party organization today are Bagwell representing the liberals and Senator Carlton H. Morris, of Kalamazoo, representing the conservatives.

The new leader needed so desperately for the welfare of our frustrated state must be a moderate with personality and ability to bring the two factions together.

From the standpoint of government he must have a program that will be fair to the sick and the needy as well as to the taxpayers—and protect impartially both industry and the unions.

From the standpoint of politics, however, the first requirement is a personality that will attract the people like Eisenhower captured their imagination in two elections.

Michigan's GOP legislators did not defeat Bagwell, as one Detroit newspaper charged. They worked as sincerely for a Republican sweep in Lansing as they worked for their own election.

The conservative lawmakers won, re-gaining control of the House of Representatives by the margin of one seat.

The state ticket lost for the seventh consecutive time. At the two ends of the party organization today are Bagwell representing the liberals and Senator Carlton H. Morris, of Kalamazoo, representing the conservatives.

The new leader needed so desperately for the welfare of our frustrated state must be a moderate with personality and ability to bring the two factions together.

From the standpoint of government he must have a program that will be fair to the sick and the needy as well as to the taxpayers—and protect impartially both industry and the unions.

From the standpoint of politics, however, the first requirement is a personality that will attract the people like Eisenhower captured their imagination in two elections.

Michigan's GOP legislators did not defeat Bagwell, as one Detroit newspaper charged. They worked as sincerely for a Republican sweep in Lansing as they worked for their own election.

The conservative lawmakers won, re-gaining control of the House of Representatives by the margin of one seat.

The state ticket lost for the seventh consecutive time. At the two ends of the party organization today are Bagwell representing the liberals and Senator Carlton H. Morris, of Kalamazoo, representing the conservatives.

The new leader needed so desperately for the welfare of our frustrated state must be a moderate with personality and ability to bring the two factions together.

From the standpoint of government he must have a program that will be fair to the sick and the needy as well as to the taxpayers—and protect impartially both industry and the unions.

From the standpoint of politics, however, the first requirement is a personality that will attract the people like Eisenhower captured their imagination in two elections.

Michigan's GOP legislators did not defeat Bagwell, as one Detroit newspaper charged. They worked as sincerely for a Republican sweep in Lansing as they worked for their own election.

The conservative lawmakers won, re-gaining control of the House of Representatives by the margin of one seat.

The state ticket lost for the seventh consecutive time. At the two ends of the party organization today are Bagwell representing the liberals and Senator Carlton H. Morris, of Kalamazoo, representing the conservatives.

The new leader needed so desperately for the welfare of our frustrated state must be a moderate with personality and ability to bring the two factions together.

and Gov. Williams hypnotized them in six.

Veteran legislators this time will embark on this difficult search, instead of relying on the party organization to produce a miracle man.

But watch especially the activity of the younger members like Senator John W. Fitzgerald, Grand Lodge, son of former Frank D. Fitzgerald; Senator Farrell E. Roberts, of Pontiac, is being elevated from the House and Senator-elect William J. Verse City, son of the late Senator James T. Milliken.

Their importance will grow in six.

Michigan's GOP legislators did not defeat Bagwell, as one Detroit newspaper charged. They worked as sincerely for a Republican sweep in Lansing as they worked for their own election.

The conservative lawmakers won, re-gaining control of the House of Representatives by the margin of one seat.

The state ticket lost for the seventh consecutive time. At the two ends of the party organization today are Bagwell representing the liberals and Senator Carlton H. Morris, of Kalamazoo, representing the conservatives.

The new leader needed so desperately for the welfare of our frustrated state must be a moderate with personality and ability to bring the two factions together.

From the standpoint of government he must have a program that will be fair to the sick and the needy as well as to the taxpayers—and protect impartially both industry and the unions.

From the standpoint of politics, however, the first requirement is a personality that will attract the people like Eisenhower captured their imagination in two elections.

Michigan's GOP legislators did not defeat Bagwell, as one Detroit newspaper charged. They worked as sincerely for a Republican sweep in Lansing as they worked for their own election.

The conservative lawmakers won, re-gaining control of the House of Representatives by the margin of one seat.

The state ticket lost for the seventh consecutive time. At the two ends of the party organization today are Bagwell representing the liberals and Senator Carlton H. Morris, of Kalamazoo, representing the conservatives.

The new leader needed so desperately for the welfare of our frustrated state must be a moderate with personality and ability to bring the two factions together.

From the standpoint of government he must have a program that will be fair to the sick and the needy as well as to the taxpayers—and protect impartially both industry and the unions.

From the standpoint of politics, however, the first requirement is a personality that will attract the people like Eisenhower captured their imagination in two elections.

Michigan's GOP legislators did not defeat Bagwell, as one Detroit newspaper charged. They worked as sincerely for a Republican sweep in Lansing as they worked for their own election.

The conservative lawmakers won, re-gaining control of the House of Representatives by the margin of one seat.

The state ticket lost for the seventh consecutive time. At the two ends of the party organization today are Bagwell representing the liberals and Senator Carlton H. Morris, of Kalamazoo, representing the conservatives.

The new leader needed so desperately for the welfare of our frustrated state must be a moderate with personality and ability to bring the two factions together.

From the standpoint of government he must have a program that will be fair to the sick and the needy as well as to the taxpayers—and protect impartially both industry and the unions.

From the standpoint of politics, however, the first requirement is a personality that will attract the people like Eisenhower captured their imagination in two elections.

Michigan's GOP legislators did not defeat Bagwell, as one Detroit newspaper charged. They worked as sincerely for a Republican sweep in Lansing as they worked for their own election.

The conservative lawmakers won, re-gaining control of the House of Representatives by the margin of one seat.

The state ticket lost for the seventh consecutive time. At the two ends of the party organization today are Bagwell representing the liberals and Senator Carlton H. Morris, of Kalamazoo, representing the conservatives.

The new leader needed so desperately for the welfare of our frustrated state must be a moderate with personality and ability to bring the two factions together.

From the standpoint of government he must have a program that will be fair to the sick and the needy as well as to the taxpayers—and protect impartially both industry and the unions.

From the standpoint of politics, however, the first requirement is a personality that will attract the people like Eisenhower captured their imagination in two elections.

Michigan's GOP legislators did not defeat Bagwell, as one Detroit newspaper charged. They worked as sincerely for a Republican sweep in Lansing as they worked for their own election.

## JUST REMINISCING

Items Taken from the Files of The Chelsea Standard

### 4 Years Ago...

Thursday, Nov. 15, 1956—

The Rev. Earnest O. Davis, a former pastor of Salem Grove and North Lake Methodist churches, has accepted a call to become pastor of St. John's Evangelical and Reformed churches at Franciscan and Rogers Corners, effective Nov. 18.

Mrs. Alfred Mayer and Mrs. Lewis Bernhart were presented "Thanks" badges. Girl Scouts high school honor given to adults for extended service. They are the first two recipients to receive the award in Washtenaw county.

Approximately 450 Chelsea area men have secured deer hunting licenses and most of these will be hunting in the northern part of the state.

### 14 Years Ago...

Thursday, Nov. 14, 1946—

The Sorenson manufacturing on the south side of Old US-12 has been sold to Bowser, Inc., of Fort Wayne, Ind.

Chelsea Artificial Breeders' Association is being officially organized at a meeting scheduled for tonight at Chelsea High school. Members signed up are Arthur Barth, Fred Bollinger, Clifford Bradbury, George Erke, Harvey Fischer, Floyd Fowler, Elton Frey, Robert Gilbert, L. S. Grossman, George Haffey, Vincent Ives, Wilbert Koch, Joe Merkel, Clarence Reddeman, Boyd Robbins, Warren Spaulding, Lowell Spikes, George Steele, Everett and Gordon Van Riper, Ernest and Erwin Wenk, Lionel Vickers and Wilber Wine.

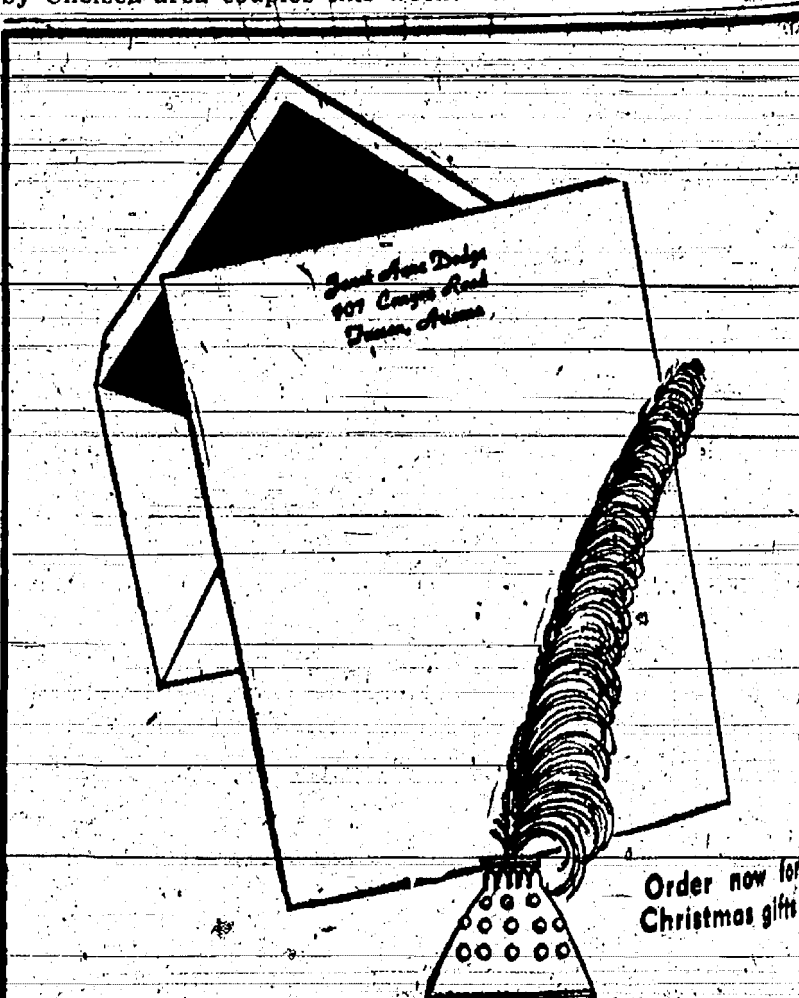
In the 34 Years ago column (Nov. 7, 1912): Twenty licenses to hunt deer have been issued by the county clerk since the deer season opened Oct. 15; however, not one Chelsea person's name appears on the list.

CHS won its sixth straight ball game when Stockbridge defeated 30-20 on the home at the golf grounds Friday noon. Stockbridge played a ball but was too light for sea's Faust, former, Bats Eisenbeiser.

### 24 Years Ago...

Thursday, Nov. 19, 1936—

Wedding anniversaries observed by Chelsea area couples this week:



## The Chelsea Standard Suggests Rytex Early American personalized stationery

A favorite for ladies of discriminating taste. An unusually fine, rag-content laid letter paper with envelopes tissue-lined. White paper with white linings and blue ink. Grey with grey linings and grey ink. Green with green linings and green ink. Name and address imprinted on sheets and envelopes in three-line script style (HL) as shown. 100 club single sheets and 50 tissue-lined envelopes for 3.50... beautifully boxed for gifts.

Mail Order Coupon  
THE CHELSEA STANDARD  
CHELSEA, MICHIGAN  
Please place my order for \_\_\_\_\_ boxes of Rytex Early American at 3.50 a box, custom-imprinted as follows:  
Name \_\_\_\_\_  
Street \_\_\_\_\_  
City, Zone & State \_\_\_\_\_  
Check Color of Paper: ☐ White ☐ Grey ☐ Blue ☐ Green  
Ordered by: \_\_\_\_\_  
Street \_\_\_\_\_  
City, Zone & State \_\_\_\_\_  
☐ Charge ☐ Payment enclosed  
For additional orders use separate sheet of paper.



**Whoever Will**  
**Will Gospel Chapel**  
 116 South Main St.  
 Sunday School 10:00 a.m.  
 Morning Worship 11:00 a.m.  
 Evening 7:30 p.m.  
 Wednesday 7:30 p.m.  
**Rev. Louis Kephart**  
 PASTOR

**COLONIAL MANOR**  
**NURSING-HOME**  
 236 East Middle Street  
 PHONE GR 9-1491  
 —★—  
 Efficient Nursing Care  
 Day and Night  
 IN BEAUTIFUL CHELSEA

**OPEN THANKSGIVING DAY**  
**STOCKBRIDGE INN**  
 WE INVITE YOU TO ENJOY OUR  
 RELISH TABLE WITH ALL DINNERS  
 OUR SPECIALTY IS STEAK FROM OUR GRILLE  
 This is flavor-fad beef from Story Book Farm. It is locally raised  
 and prepared for shipment to all parts of the United States. The  
 cattle are corn fed and no chemicals or hormones are added to their  
 diet. This beef may be bought for your home freezer, cut to order,  
 and we can furnish you with full information.  
 10% off on all service checks of \$5 or more  
 We also cater to private parties, clubs, etc., here, or in your home.  
**DAN SEXTON, Proprietor**  
 Phone Ulysses 1-2763



**Happy Thanksgiving....**  
 We at Balmer's feel that we have much  
 to be thankful for and we humbly give  
 thanks, for this land of plenty in which  
 we live, and for our democratic way of  
 life. May we all be aware of the ad-  
 vantages of living in America, living in  
 Michigan, and of living in Chelsea.

**Balmer's Brake Service**  
 140 West Middle St. Phone GR 5-5131



"I had a drumstick 'n' cranberries 'n' mince  
 pie 'n' everything!" When your whole family  
 can't be together Thanksgiving Day, pick up  
 your telephone. In seconds you're sharing  
 Thanksgiving with those you love.  
**PHONE THE FOLKS LONG DISTANCE**  
 Michigan Bell Telephone Company

**Club and Social**  
**Happenings**  
**BETA SIGMA PHI**  
 A meeting of Beta Sigma Phi  
 sorority was held Nov. 15 at the  
 home of Ruth Bourle.  
 Members decided to draw names  
 for "Secret Pals" at the last meet-  
 ing in December, limiting the ex-  
 change of remembrances to cards  
 and a gift at Christmas.  
 Christmas cards will be sent to  
 Beta Sigma Phi shut-ins by the  
 sorority, it was decided.  
 Ruth Bourle gave the program,  
 "Verse Making," giving the ex-  
 planation of the meaning of verse.  
 Recordings of verses, including  
 "Highway Man" and several other  
 examples, were played.  
 Evelyn Kiel gave the program,  
 "Poetry into Music," explaining  
 what music is and what it con-  
 tains. The poem, "Trees," set to  
 music, was played as an example.  
 She also gave an analysis of music,  
 including rhythm, melody, harm-  
 ony and tone color and played  
 "Beautiful Ohio" which is an ex-  
 ample of a five-tone pattern.  
 The next meeting, Dec. 8, will be  
 a formal initiation of Joan De-  
 Mara, Martha Lulek and Shirley  
 Trinkle, at the home of Therese  
 Hankers.

**LIMA CENTER**  
**EXTENSION CLUB**  
 Twenty-five members attended  
 the November meeting of Lima  
 Center Extension Club held Wed-  
 nesday, Nov. 16, at the home of  
 Mrs. George Freysinger.  
 Also welcomed as a guest at the  
 meeting was Mrs. Alice Epple, the  
 Washington county home demon-  
 stration agent.  
 Mrs. Walter Boutler, a former  
 member, rejoined the group.  
 At the morning session, Mrs.  
 Lelroy Feldkamp demonstrated the  
 making of Christmas door decora-  
 tions and at the afternoon business  
 session the chairman, Mrs. Alfred  
 Eismann, announced that Mrs. Jule  
 Eder plans to hold open house at  
 her home, beginning at 11 a.m.  
 Wednesday, Nov. 30, for any mem-  
 bers of the group who wish to at-  
 tend and prepare Christmas decora-  
 tions. A pot-luck dinner will be  
 served at noon.  
 The group also made plans for  
 the annual Christmas party to be  
 held at Lima Center Community  
 Hall Wednesday, Dec. 14, 11:30 a.m.  
 Mrs. Alfred Johnson is to be the  
 hostess.  
 All members are to bring a dish  
 to pass; also, their contribution  
 of gifts for the patients at Ypsi-  
 lanti State hospital and remem-  
 brances for their "mystery sister."

**AGRICULTURAL**  
**ENTREPRENEURS**  
 The Agricultural Entrepreneurs  
 Farm Bureau Group met Thursday,  
 Nov. 17 at the home of Mr. and  
 Mrs. Calvin Frey with 12 families  
 present.  
 Mrs. Erwin Pidd, reported for  
 the women's committee.  
 The group was reminded to at-  
 tend the Dexter Chamber of Com-  
 merce meeting being held Tuesday,  
 Nov. 22 dealing with a toll-free  
 dial service between Dexter and  
 Chelsea. Mrs. Shirley Heydlauff  
 will call Chelsea exchange members  
 and Mrs. Lelroy Feldkamp will con-  
 tact Dexter exchange members.  
 Tuesday morning to again remind  
 every member about the meeting.  
 The group decided to have a  
 Christmas party Dec. 10 at the  
 Lima Township Hall starting with  
 a pot-luck supper at 7:00 p.m. fol-  
 lowed by a 50-cent gift exchange  
 and Santa Claus. Mr. and Mrs. Cal-  
 vin Frey will donate a Christmas  
 tree for the occasion.  
 Charles Powers led the discus-  
 sion on "Do we make the best use  
 of Farm Bureau?"  
 Euchre was played and refresh-  
 ments served.

**GOLD RUSH PUZZLE**  
 U. S. officials in Washington are  
 still puzzled by recent gold rush  
 in European capitals, which forced  
 price of gold up suddenly. Gold  
 prices quickly returned to near-  
 normal and Washington has an-  
 nounced that no devaluation of the  
 U. S. dollar is in sight.  
 It is fine to think you are usu-  
 ally right, as long as you can  
 keep it a secret.

**Nancy Anne Lindow**  
**Becomes Bride of**  
**Frank L. Cooper**  
 Nancy Anne Lindow and Frank  
 L. Cooper exchanged wedding vows  
 during a ceremony performed at  
 7:30 p.m. Friday at St. Paul's  
 Lutheran church, Ann Arbor, with  
 the Rev. Vernold Aurich officiat-  
 ing.  
 Parents of the couple are Mr.  
 and Mrs. Herbert Lindow, 550 Freer  
 Rd., and Mr. and Mrs. William J.  
 Cooper of Jonesboro, Ark. The  
 bridegroom had made his home in  
 Ann Arbor.  
 "Soloist for the ceremony was  
 Ralph Schmittke of Ann Arbor.  
 Accompanied on the organ by the  
 bride's uncle, Otto Miller, he sang  
 "O, Perfect Love."  
 The bride chose for her wedding  
 a portrait gown of hand-clipped  
 lace and pleated tulle with alter-  
 nating ruffles of lace and tulle.  
 The fitted bodice was finished with  
 a subrina neckline and the skirt  
 extended into a chapel train. A  
 Swedish crown of lace, seed pearls  
 and sequins held her fingertip-  
 length veil of illusion. Her bou-  
 quet was a cascade of white roses  
 and white carnations centered with  
 a white orchid corsage.  
 Judy Anne Lindow, cousin of  
 the bride, was maid of honor,  
 wearing for the occasion a bal-  
 lerina-length gown of pink lace  
 over tulle, trimmed with pink  
 satin bows at either side of the  
 skirt. She carried a colonial bou-  
 quet of pink roses and white car-  
 nations.  
 Mrs. Donald Worley of Ann Ar-  
 bor, a sister of the bridegroom,  
 was the bridesmaid. Her gown  
 matched that of the maid of honor  
 but her bouquet was of all pink  
 roses and carnations.  
 The bride's mother wore a fur-  
 trimmed pale green brocade dress  
 with matching accessories and a  
 white orchid corsage.  
 Donald Worley, brother-in-law of  
 the bridegroom, assisted the bride-  
 groom as best man. Ushers were  
 Richard Lindow, brother of the  
 bride, and Kenneth Lindow, who  
 is her cousin.  
 Following the ceremony the  
 bride's parents entertained at a  
 reception held at Brauer hall and  
 attended by 100 guests.  
 Aunts of the bride, Mrs. Arthur  
 Miller of St. Louis, Mo., and Mrs.  
 Elmer Lindow, poured coffee; Mrs.  
 Clifford Miller of Inkster and Mrs.  
 Nelson Kushmaul of Leslie, were  
 at the punch table; and Jacqueline  
 Miller of Inkster, was in charge of  
 the guest book.  
 The guests present were from  
 Detroit, Leslie, Saline, Dexter,  
 Pontiac, Birmingham, Dearborn,  
 Ann Arbor, St. Louis, Mo., and  
 this vicinity.  
 The bride attended Chelsea High  
 school, and is now studying with  
 the International Correspondence  
 Schools.  
 The bridegroom, now employed  
 at Argus Division, Sylvania Elec-  
 tric Products, Inc., Ann Arbor, at-  
 tended Valley View High school in  
 Arkansas and served two years  
 overseas with the U. S. Army.  
 The new Mr. and Mrs. Cooper  
 are making their home at 623  
 South Main St.

**Goetz Relatives Called**  
**To Jackson by**  
**Death of Grandson**  
 Mr. and Mrs. Merle Lohman of  
 Tucson, Ariz., son-in-law and  
 daughter of Mr. and Mrs. Otto  
 Goetz, were called to Jackson last  
 week because of the death of their  
 three-year-old grandson, Richard  
 son of Mr. and Mrs. Richard Loh-  
 man of Jackson. The child died  
 Nov. 12, of meningitis.  
 Mr. and Mrs. Goetz attended the  
 funeral held Tuesday at Leslie.  
 The Merle Lohmans called Thurs-  
 day at the home of Mr. and Mrs.  
 Goetz before they returned to Tuc-  
 son. They were accompanied here  
 by Mr. and Mrs. Richard Lohman  
 and son, Stevie, of Jackson, Mrs.  
 Evelyn Morgan of Walland, Tenn.,  
 and Mrs. Louise Hickman of Day-  
 ton, Tenn.

**BOY**  
**SCOUT**  
**NEWS**  
**TROOP 76**  
 At our meeting Ken Reinhardt,  
 David Adams, Gary White, and  
 Dennis White went forward to  
 pass their requirements at the  
 Board of Review.  
 Our troop broke up into groups  
 and helped the tenderfoots and the  
 new Webelos who are coming into  
 the troop.  
 Gary White, scribe.  
 An automobile accident is like  
 marriage; once is usually enough.

**BOTTLED**  
**and HEATING**  
**GAS SERVICE**  
**FLAMEGAS**  
**SERVES AMERICA**  
 ★ SAFE  
 ★ CLEAN  
 ★ DEPENDABLE  
**Worden's Flamegas**  
 4221 Cedar Lake Drive  
 Phone GR 9-5961  
**Flamegas Ypsilanti**  
 5025 Carpenter Road (US-23)  
 Phone Ypsilanti HU 2-4522

**TRANSIT-MIX**  
**CONCRETE**  
 Finest quality concrete made to your  
 specifications in our new automatic plant  
 and delivered to your job location.  
 A fleet of 6 modern transit-mix trucks  
 assures you of prompt delivery anywhere  
 in the area.  
**PROMPT DELIVERY**  
 STONES: 1 1/2", 1", 3/4", 1/2", 3/8" — 2NS SAND  
**KLUMPP BROS.**  
**GRAVEL CO.**  
 Phone Chelsea GR 9-2712  
 4950 Loveland Road Grass Lake, Mich.

Standard Ads Are a Good Shopping Guide!

**FURNACE DUST FILTERS**  
 20x20x1 — 16x20x1  
 20x25x1 — 16x25x1  
 80c each

**W. E. FARRELL**  
**SHEET METAL**  
 INDUSTRIAL AND GENERAL SHEET METAL WORK  
 115 WEST MIDDLE STREET—CHELSEA  
 PHONE Greenwood 9-2011

**Before you buy any car,**  
**see COMET**

**Come in...now**

**\$44<sup>90</sup>\***

**...just a month**

**and a Comet sedan is yours!**

- Still priced with or below compacts of other makers!
- Still first compact with fine-car styling—luxury touches everywhere!
- Still big-car comfort—small-car handling!
- Still outstanding mileage on regular gas—choice of two engines!
- Still more features...better ride...greater value!
- Now all models available for immediate delivery!

**CHELSEA IMPLEMENT COMPANY, INC.**  
 3231 Manchester Road  
 Chelsea, Michigan

\*After down payment; includes heater and defroster; add state and local taxes where applicable. White sidewall tires optional at extra cost.



be paid by the undersigned, never  
protect its interest in the premises.  
said premises are described as follows:  
that certain place or parcel of land  
uate in the Township of ...  
County of Washington

and, described as follows:  
 Lot 151 West Willow-Union  
 division of part of east 1/4 of  
 11 and 14, Town 8 South, Range  
 East, Ypsilanti Township, Washtenaw  
 County, Michigan, according to  
 plat recorded in Liber 10 of  
 page 28, Sheet 2 thereof having  
 revised in Liber 10 of Plats, page  
 Washtenaw County Records.  
 Dated at Detroit, Michigan,  
 22, 1980.  
 COLONIAL FEDERAL SAVINGS

POINTE WOOD  
BURNING AND HEAD  
Attorneys for a number of Mortgagees  
1969 First National Building  
Detroit 26, Michigan.

[illegible]

Indexer 863 of Records, page 51 of Book  
Deeds' Office, Washinaw County,  
Oregon, on which mortgage there is due  
the sum due on the date of this notice to  
principal and interest and other charges  
thereon by said mortgagee the sum of \$11,000.  
The attorney's fee of \$75.00 as provided  
in said mortgage, and no suit or pro-  
ceeding having been instituted to fore-  
close the money secured by said mort-  
gage, my part thereof.

Notice is hereby given that by virtue  
of the power of sale contained in said  
mortgage, I have caused the same to be

operative and the statute in force made and provided, on Friday, October 10, 1981, at ten o'clock in the forenoon, the undersigned will, at his residence in the City of Ann Arbor, Michigan, be the place where the Court for the County of Washtenaw will, sell at public auction to the highest bidder the premises described in said mortgage, or so much thereof as may be necessary to pay the amount secured by said mortgage, with interest.

the Township of Washington County, New York, containing about 60 acres more or less, situated in the northwestern quarter of Section 7, Town 3 south, Range 7 east, Yorktownship, Washington County, New York, according to the plat filed as follows:

recorded in libar 14 of Plat. pag  
Washitenaw County Records.  
ated: October 20, 1960.  
FEDERAL NATIONAL MORTGAGE  
ASSOCIATION, Assignee of Mort  
COOPER & BLASHFIELD  
torney for Assignee of Mortgage  
Business Address:  
1001-B First National-Building  
Ann Arbor, Michigan  
Telephone: NORMandy 2-4121

**MORTGAGE FORECLOSURE**  
Default, having been made in the  
and conditions of a certain mortgage  
sitting therein a power of sale to  
Stephen D. Hale and Faye Hale,  
and wife, as mortgagors, to J.  
Harnes and Company, a Michigan  
corporation, as Mortgagee, which  
mortgage is dated August 6, 1958 and  
filed August 6, 1958 in Liber 834  
of, pages 42-44 Register of Deeds  
of, Washtenaw County, Michigan,  
hereafter acknowledged by the said

... Federal National Mortgage Association, a National Mortgage Association, which assignment is dated September 17, 1958 and recorded September 17, 1958 in the Office of Records, page 555 of the Deeds Office, Washantaw County, Oregon, on which mortgage there is to be due on the date of this note the principal and interest and other amounts followed by said mortgage the sum of \$9,925.81 and an attorney's fee of \$100.00 is provided for in said mortgage, suit or proceeding at law having been instituted to secure the money

Notice is hereby given that by virtue of the power of sale contained in the mortgage, which upon default has become operative, and the statute in reference thereto and provided, on Friday, January 1, 1961, at ten o'clock in the forenoon of the day then designated, at the Court House of the County of Washington, District of Columbia, at the City of Ann Arbor, Michigan, the place where the same shall be sold, at public auction to the highest bidder, for cash.

Under the premises described in said mortgage, or so much thereof as may be necessary to pay the amount of said said mortgage with interest at said annual rate upon the date of sale of said premises, together with all legal costs and expenses, together with said attorney's fee, allowed by law, and any and all sums which may be due, the undersigned, necessary to pay the interest in the premises, situated in the Township of Ypsilanti, County of Washtenaw and State of Michigan, to Lot 343, except north-westerly

feet and southeasterly 6.10 to 10.00  
of, Washnawen Concourse No. 1  
part of the northeast quarter of  
tion 8, and the northwest quarter  
Section 2, town 3 south, range 1  
Ypsillanti Township, Washnawen C  
Michigan, according to the  
thereof as recorded in Liber 10  
Plats, pages 21 and 22, Washnaw  
County Records.

FEDERAL NATIONAL MORTGAGE  
ASSOCIATION.

Assignee of Mortgage  
and October 27, 1900.

COOPER & BLANSHFIELD  
Attorneys for Assignees of Mortgage  
Business Address:  
One First National Building  
Ann Arbor, Michigan  
Telephone: NORMandy 2-4426

Company, a Michigan corporation, which mortgage to dated June 23, 1958 and recorded June 25, 1958 in the Register of Records, pages 12-13 of Dood's Office, Washington, Michigan, and thereafter assigned and mortgage to Federal National Mortgage Association, a National Association, and which assignment dated September 16, 1958 and recorded September 17, 1958 in Liber 840 of the Register of Records, pages 583-584 of Dood's Office, Washington, Michigan, on which

Notice is hereby given that by the power of sale contained in the mortgage, which upon default has been foreclosed, and the statute in such

...and provided, on Friday, the 18th day of June, 1861; at ten o'clock in the forenoon, the undersigned will, at the request of the Washington County Board of Supervisors, in the City of Ann Arbor, Michigan, be at the place where the Court for the County of Washington will sell at public auction to the highest bidder the premises described in the foregoing or so much thereof as may be necessary to pay the amount of the mortgage on said mortgage to date of sale, with an annuum thereon to date of sale.

The east 22 feet of lot 40 and  
west 88 feet of lot 88 Washington  
course No. 1 part of the north  
quarter of Section 8, town 1  
range 7, east, Ypsilanti Township,  
Washtenaw and State of Michigan.

Washnetaw County Clerk as recording  
to the plat thereof as recorded  
under 14 of Plats, pages 18 and  
Washnetaw County Records.  
FEDERAL NATIONAL MORTGAGE  
ASSOCIATION, Assignee of Mortgage  
dated, October 27, 1980,  
COOPER & BLANCHFIELD  
Attorneys for Assignee of Mortgage  
Business Address:  
1-18 First National Building  
N. Arbor, Michigan  
Moramandy 8-4488 Oct-11-80

aphone: 401-2211



## Club and Social Activities

### DEBORAH CIRCLE

Deborah Circle of the Methodist church, met Wednesday morning, Nov. 10, at the home of Mrs. James Hoffmeyer with 17 members and one new member, Mrs. Clare Warren attending.

Mrs. Alan Conklin presented the opening devotional service and Mrs. Richard Kern presided during the program period, her topic being "When Children Ask About Prayer."

Announcement was made that Mrs. George Palmer is chairman of the committee responsible for the Christmas program at the Dec. 7 meeting of the Women's Society of Christian Service. Planned is a musical program entitled "Christmas Bells." The program will begin at 8 p.m.

Also announced was the Christmas children's party and Sunday school service at the church Dec. 11.

At the conclusion of Wednesday's meeting Mrs. Robert Daniels and the hostess served refreshments.

### FREEDOM IDEAL

Freedom Ideal Homemakers Extension club met Friday at the home of Mrs. Will Reno. There were 10 members present and Mrs. Alfred Kuhl acted as co-hostess for a dessert lunch served at 1:30 p.m.

In the absence of the chairman, Mrs. Arthur Kuhl, the meeting was in charge of Mrs. John Miller.

The lesson on the topic, "Tax Assessment," was presented by Mrs. Charles Kruger.

The next meeting, Wednesday, Dec. 14, will be a Christmas party for members and their families at the home of Mrs. Alfred Kuhl. A pot-luck dinner is scheduled for 7 p.m. and it is planned to exchange 50-cent Christmas gifts.

### JERUSALEM HOMEMAKERS

Members of Jerusalem Homemakers Extension club for the Nov. 18 meeting held at her home. She was assisted by Mrs. William Van Riper as co-hostess.

It was announced that gifts for the patients at Ypsilanti State hospital are to be brought to the December meeting which is to be held one week earlier than the regular date—Tuesday, Dec. 13, at the home of Mrs. Robert Kushmaul. Roll call response at that meeting is to be on the topic, "Christmas Ideas."

At the December meeting, also, "mystery sisters" of the past year will be revealed.

"Alcohol and gasoline when mixed is a potent cleaning fluid guaranteed to wipe out any driver on the spot."

Nov. 2-Dec. 1-8

Nov. 2-Dec. 1-8

Nov. 2-Dec. 1-8

Nov. 2-Dec. 1-8

Nov. 2-Dec. 1-8

Nov. 2-Dec. 1-8

Nov. 2-Dec. 1-8

Nov. 2-Dec. 1-8

Nov. 2-Dec. 1-8

Nov. 2-Dec. 1-8

Nov. 2-Dec. 1-8

Nov. 2-Dec. 1-8

Nov. 2-Dec. 1-8

Nov. 2-Dec. 1-8

Nov. 2-Dec. 1-8

Nov. 2-Dec. 1-8

Nov. 2-Dec. 1-8

Nov. 2-Dec. 1-8

Nov. 2-Dec. 1-8

Nov. 2-Dec. 1-8

Nov. 2-Dec. 1-8

Nov. 2-Dec. 1-8

Nov. 2-Dec. 1-8

Nov. 2-Dec. 1-8

Nov. 2-Dec. 1-8

Nov. 2-Dec. 1-8

Nov. 2-Dec. 1-8

Nov. 2-Dec. 1-8

Nov. 2-Dec. 1-8

Nov. 2-Dec. 1-8

Nov. 2-Dec. 1-8

Nov. 2-Dec. 1-8

Nov. 2-Dec. 1-8

Nov. 2-Dec. 1-8

### SYLVAN EXTENSION CLUB

Sylvan Extension club members met Wednesday afternoon for the November meeting at the home of Mrs. Philip Hoyer. It was a general business session with an announcement made that the next meeting will be held Thursday, Dec. 15, at 1 p.m.

### PHILATHEA CIRCLES

Morning Philathea Circle of the Methodist church entertained members of the Afternoon Circle at a breakfast meeting held Wednesday morning at the church. Hostesses were Mrs. John Fischer and Mrs. Lawton Steger.

Mrs. Leigh Palmer was the program chairman; those participating in the devotional service and program including Mrs. Harry Litcher, Mrs. Robert Harris, Mrs. George Walworth, also, Mrs. Velma King and Mrs. Nancy Taylor of the Methodist Home.

### LYNDON EXTENSION CLUB

Lyndon Extension club held a meeting Thursday afternoon at Lyndon Town Hall with 28 members, 21 guests and three children present for a luncheon served by Mrs. Floyd Balmer, Mrs. Wirt Boyce, Mrs. Nettie Hall and Mrs. Charles Fuhrmann.

The luncheon tables were decorated in keeping with the Thanksgiving theme.

Cards and other games furnished diversion during the afternoon under the direction of Mrs. Carl Schoonover and Mrs. Wirt Boyce.

Mrs. Earl Lee, Mrs. Hannah Hannevald and Mrs. Wirt Boyce conducted a silent auction and this was followed by a short business session in charge of the chairman, Mrs. Stephen Baker, during which members decided to have a family supper and Christmas party Dec. 10, at 7:30 p.m., at Lyndon Town Hall.

Hostesses for the Christmas gathering are to be Mrs. Stephen Baker, Mrs. Earl Lee, Mrs. Carl Schoonover and Mrs. George Beeman.

### Tullman-Geddes

#### Vows Exchanged

#### At Charlotte Church

Mr. and Mrs. Marvin H. Tulman of 14 Millbrook Court, Great Neck, N.Y., have announced the marriage of their daughter, Jane Elizabeth to William R. Geddes, III, son of Mr. and Mrs. W. R. Geddes, of 215 Jefferson St.

The ceremony took place Nov. 11, at the Congregational church in Charlotte, with the Rev. Loomis officiating.

The bride, given in marriage by her father, was attended by her sister, Jill Tulman, while John Morrison of Elgin, Ill., assisted the bridegroom as best man.

The bride is a 1959 graduate of the North Senior High school at Great Neck, N.Y., and has been attending Olivet College.

Mr. Geddes graduated from Olivet College last June. The couple will reside at Charleston, Ill., where he is employed by a Charleston radio station.

# A GIFT FROM MERKEL'S for

## GIFT WRAPPING FREE DELIVERY

# a PERFECT Christmas!

### DELIGHTFUL DANISH CHAIRS

Comfort without bulk. Foam cushions.

From \$39.95

### FLOOR LAMPS

For modern or colonial homes.

From \$19.95

- ★ MIRRORS
- ★ PICTURES
- ★ SMOKING STANDS
- ★ MAGAZINE RACKS
- ★ SERVING CARTS
- ★ SNACK TABLE SETS

### RECLINER CHAIRS

For solid comfort.

From \$49.95

### SOFA PILLOWS

Foam filled with washable corduroy covers in a rainbow of colors.

\$1.99 - \$2.99 - \$3.99

### MERSMAN LIVING ROOM TABLES

Walnut, maple, mahogany. Formica and wood tops.

From \$19.95

### COLONIAL ROCKERS

In solid maple.

\$29.95

With foam seat and back pads \$39.95

### HASSOCKS

Wide assortment in durable, washable vinyl.

From \$6.95

### LANE CEDAR CHESTS

Modern and colonial designs. Walnut, blond, maple, cherry.

From \$49.95

### TABLE LAMPS

A varied assortment in brass, ceramic and wood. 3-way switches for correct lighting.

From \$10.95

### BRIDGE SETS

Bright colors. Various sizes and styles.

\$29.95 and up

### DESKS

MODERN - COLONIAL. In walnut, maple, mahogany. Many with mar-resistant plastic tops.

From \$39.95

## The Wonderland that is Christmas

Soon we'll be caught in the magic spell of Christmas when old and young alike are children in their hearts.

Every one of us shares the spirit of Christmas... with our greetings of friendliness... our gifts of selfless generosity... the good will shining in our eyes.

It's our sincere wish to help you experience a happiest Christmas... by making your visits to Goodyear's pleasantly remembered interludes.

The assortments, the quality, the values, the services available are all intended to make your Shopping at Goodyear's more enjoyable... and to bring you some of the "Wonderland that is Christmas."

**Goodyear's**  
ANN ARBOR

# MERKEL BROTHERS

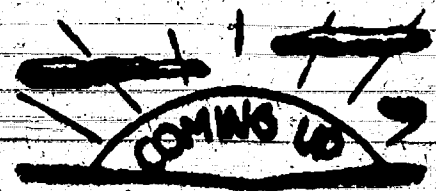
BEAUTIFUL HOME FURNISHINGS



# The Hi-Light

Edited by Students of the Chelsea High School Journalism Club

Co-Editors  
Barbara Irwin—Nancy McCalla



Nov. 28—Future Nurses meet here at 8 p.m.  
Nov. 29—Hi-Y Fun Night.  
Nov. 30—Open House at the Junior High school, 7 to 9:30 p.m.  
Dec. 1—Washtenaw Conference of Student Councils at Dexter.

The Lockheed Leadership Fund is announcing scholarships to at least five colleges and universities throughout the nation, starting next fall.

Scholarships are available to high school seniors who have demonstrated leadership ability by school grades and participation in school and community activities. They provide full tuition plus \$500 a year for expenses.

Six of the scholarships are in engineering fields related to the

air-space-electronics industry, an industry blanketing almost every one of the physical sciences. The other three scholarships are in non-engineering fields applicable to the industry.

One could apply to the school of his choice. A complete listing of the schools where scholarships are offered, together with the details on application and eligibility, may be consulted in the study-hall poster section. Don't delay. Deadlines vary, but most colleges require applications to be returned no later than January.

The good intentions of the Student Council members were expressed when the Council decided to sponsor the Annual World Clothing Fund and the canned food drive. Paula Romine was appointed head of a committee to plan a dance for Nov. 9 where clothing would be taken instead of money.

Barbara Wenk and Kayma Smith were appointed chairmen of a committee to take care of the canned food drive. It will start Dec. 12 and Dec. 16. A \$5 prize will be given the class collecting the most food.

awarded at the Christmas assembly.

Virginia LeVan was appointed general chairman of the Christmas program this year. A skit will be given by Student Council members. Paula Romine will head a committee to make posters for coming assemblies, starting with the one on Russia.

Organization of a State Student Council was discussed, but no decision was reached. Several changes were approved for the Journalism dance to be held Dec. 17.

Movies shown the past week were "Letter to a Rebel," "What Electricity," "ABC of Jet Propulsion," "Lewis & Clark," "Guns, Bombs and How to Use Them," "Seventeenth Century English Literature," "Heat—Its Nature and Transfer," "Literary Appreciation—How to Read Poetry," "True Story of Robinson Crusoe." The diversity of interest shown by these titles is indicative of the breadth of the high school curriculum.

Chelsea High School choir will perform a practice program during the High School Open House Dec. 7. The real program will be offered Dec. 8. There will be several solos at each concert; girls are trying out for the Chellettes who will also sing. Several types of music will be presented—semi-popular, light, comic, and sacred.

The Hi-Y club under the leadership of President Paul Schramm is planning a variety of activities, such as a fun night in late November, probably featuring strenuous games. Initiation of new members is being planned. Purchase of a trophy for the school is also under consideration. They have discussed sharing part of the cost of transportation to games played elsewhere.

The Sophomore class is working on the money-making project of selling candy. Sales are brisk, and students are awaiting the arrival of the second (reorder) shipment. Geometry students are presently studying parallel lines under the direction of Mr. McGill. History students are reviewing the Renaissance.

The class of '61 has completed the sale of Christmas candy. They then spent all their spare energy on helping to produce the props and scenery for the performances of the senior play "The Diary of Anne Frank" which was presented last Friday and Saturday.

Senior home ec. girls have been busy fitting patterns and trying to pick up a suitable wardrobe for their senior trip. Members of economics and government classes are working on their term papers which are not light assignments. Senior English classes have been reading and enjoying MacBeth.

## St. Barnabas Women Hear Talk by Former Japanese Teacher

Churchwomen of St. Barnabas held a regular monthly meeting Thursday evening at the home of the Rev. and Mrs. Allan Reed. Guest speaker at the meeting was Miss Alice Sano of Ann Arbor, who told of her experiences as a teacher of kindergarten children at St. Margaret's Episcopal school in Japan. She showed colored slide pictures of a Christmas pageant given by the school children.

Miss Sano also spoke of her work among Japanese people who had never heard of Christianity before.

The pageant depicted the story of the Birth of the Christ Child in Bethlehem.

Mrs. Sano was introduced by the program chairman, Mrs. Robert Baldwin.

The meeting had been opened with a devotional service by the Rev. Allan Reed.

Mrs. Judson Goltra, president of the group, reported on progress of preparations accomplished at "work days" for the coming Christmas bazaar at the church, Saturday, Dec. 3.

Mrs. Goltra also announced that St. Barnabas Churchwomen have been invited to attend a study group gathering Thursday afternoon, Dec. 8, at St. Andrew's Episcopal church, Ann Arbor. Speaker at that meeting is to be the Rev. Richard Cocksell, former St. Barnabas church vicar. The study topic announced is "I Believe in the Holy Ghost."

At the close of the meeting, refreshments were served by the hostess.

There is only one problem about money harder to solve than making it, and that is keeping it once you have made it.

## NOTICE

**KRAFTY PRODUCTS Upholstering Co.**  
announces their new location

425 N. MAIN ST.  
GREGORY, MICH.

Temporary headquarters during construction of our new building, will be in my home at the same address.

Savings up to 40% on rebuilding, restyling and upholstering furniture.

A SHORT DRIVE TO GREGORY IS A BIG SAVINGS TO YOU!  
Phone ALpine 6-2800

## Mystery Farm . . .

(Continued from page seven)

of the farm when, on Sept. 27, 1846, a portion of the south end of the farm was "sold to the Central Railroad" as a right-of-way.

When McNally died Nov. 14, 1854, the administrators of his estate at his request, were two men he had designated in his last will and testament as "my good friends." The two men were Elisha Congdon and Rodney Ackley.

According to information on ownership records, an affidavit to that effect was to be published, according to legal requirements, in a newspaper published in the county, naming the paper as the "Michigan Argus," published at Ann Arbor.

Other notations on ownership records show that on Dec. 6, 1900, another right-of-way was sold at the south end of the farm—this one to Samuel F. Angus and James D. Angus, promoters of the Hawks-Angus electric railway which lost out when the old DUE (Detroit United Railway) succeeded in getting its track in first from Detroit to Jackson.

Others listed as owners of the various parts of the property through the years are Adam Spies, 1847; Roswell and John R. Gates, 1864; Thomas and John R. Gates, 1864; Thomas and Roxa Wilkins, 1868; Mary E. Depew, 1870; Milton B. Millsbaugh, 1874; William H.

Calkins, 1878; Daniel Doran, 1882; and then, Margaret Conway, daughter of Daniel Doran, who became the owner following his death July 1, 1895.

Other parcels of the farm are recorded as having been owned by the following: Charles Higgins, 1837 and 1840; William and Sylvia Davison who sold to Daniel Doran, in 1850; Patrick Donnelly, 1851; John Depew (also spelled Depuy and Depue), 1853.

Heirs of John Depew, who died in 1863, were listed as his widow, Mary E., and three sons and two daughters, William, Henry, Charles, Julia and Libby. The latter became a school teacher and taught in

Chelsea schools for many years. Among those who called The Standard office to identify the farm are the men at Farmers' Supply Co., Arthur Paul, the men at Blass Elevator Co., Charles Curtis and Mrs. Walter Beutler.

## THE BUSINESS DIP

Administration economists say business dip is not serious and that upturn will be apparent in coming months. Some private economists disagree and average opinion among the private forecasters is that business will not have upturn until mid-1961.

Standard Want Ads Get Results!

If You Plan To Build or Remodel Your Home Call Us for . . .

**FREE ESTIMATES OR BIDS**

— on —

**PLUMBING, WIRING and HEATING**

All Work Guaranteed with 1 Year Free Service

**WE SELL FOR LESS - WE WILL SAVE YOU MONEY**

Hours: Daily, 8-5:30; Friday, 8 a.m. to 5 p.m.

EMERGENCY SERVICE CALLS: GR 5-8175

**HILLTOP PLUMBING, HEATING & ELECTRICAL CONTRACTORS**

201 SOUTH MAIN STREET

Phone GR 5-7201

Chelsea, Mich.

**CAUSE FOR GIVING THANKS**



Thanks be for milk, good so many ways. Thanksgiving of any kind. Young and old enjoy it.

Serve milk at your Thanksgiving feast. Plain or chocolate, it's refreshing, delicious and chock-full of food values. Use it to enrich your cooking, too.

**WEINBERG DAIRY**

QUALITY PASTEURIZED DAIRY PRODUCTS

Old US-12

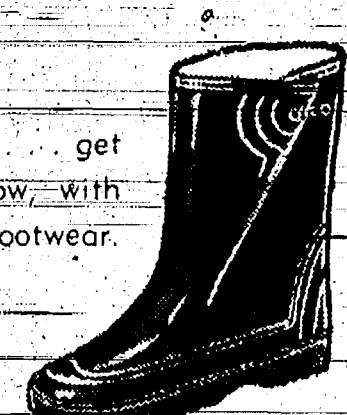
Phone GR 5-5771

Ready for the Weather!



**BALL BAND Rubbers & Boots**

Don't hazard winter weather. get ready for rain and snow now, with good looking, wet weather footwear. A style for every shoe!



- ★ 4-Buckle
- ★ 5-Buckle
- ★ Sheeplined with zipper
- ★ Insulated
- ★ Zipper Dress
- ★ Regular or Toe Rubbers

**FOSTER'S Men's Wear**



For us, Thanksgiving Day is more than a commemoration of the occasion on which the Pilgrims gathered before an abundant feast to celebrate the establishment of their firm footing in America.

For us, Thanksgiving Day has become an occasion for pausing to count the blessings that have come to the peoples of America year by year. This national holiday arrives annually as a milestone in the journey of progress launched by our forefathers many years ago.

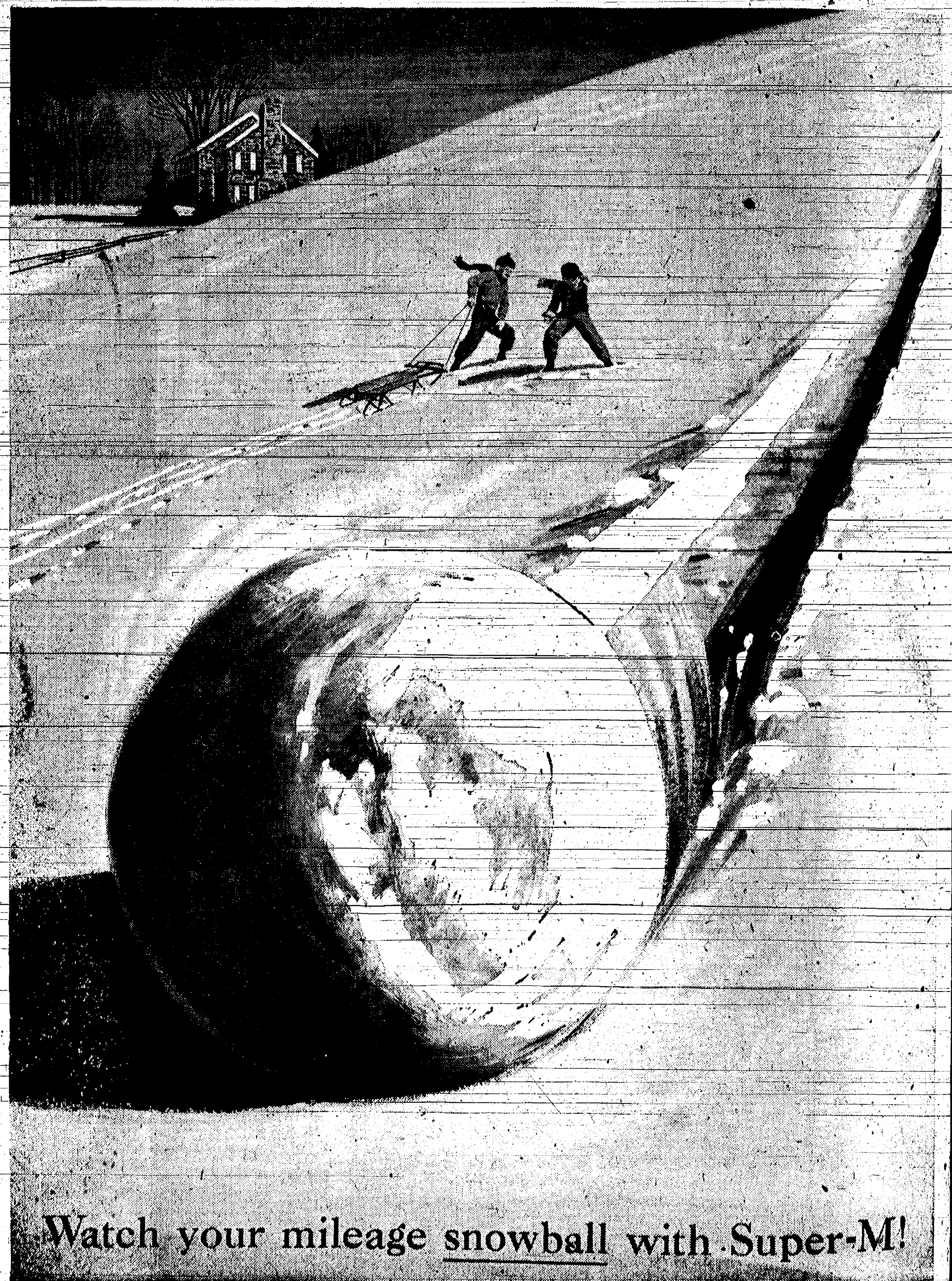
**Finkbeiner Lumber Co.**

Phone GR 9-3881



On Old US-12 Just off S. Main St.

MARTIN STEINBACH, OWNER



Watch your mileage snowball with Super-M!

**MARATHON SUPER-M® GASOLINE**

*Marathon goes farther to make friends*

GET YOUR GUARANTEED RADIATOR SERVICE AT THIS MARATHON SERVICE STATION:

**DETLING'S MARATHON SERVICE**

Corner South Main and Old US-12

PHONE GR 5-7201